

Wellington Estates 34 • The Belmont
1637 Kilbarron Drive • \$364,900



Design Features and Decorator Choices:

- Approximately 1856 Sq. Ft.
 - Full Basement
 - 3 Bedrooms
 - 2 ½ Baths
 - 2nd Floor Loft
- Double Bowl Vanity in Primary Bath
 - Kitchen Island
 - 2nd Floor Laundry
 - Video Doorbell
 - Garage Door Opener
 - 64 Estimated HERS Score
- Upgraded Aristokraft Cabinets
 - Crown Molding on Cabinets
 - Smooth Top Range
 - GE Spacesaver Microwave
 - Stainless Steel Appliances
- LVP Floors in Kitchen and Breakfast
 - Moen Eva Chrome Vanity Faucets
- Recessed Style LED Lights in Kitchen
- Ceiling Fans in Great Room and Primary
 - Upgraded 6pd Carpet Pad
 - Pendant Lights at Island



11025 Reed Hartman Hwy.
Cincinnati, OH 45242
513.745.9019
johnhenryhomes.com

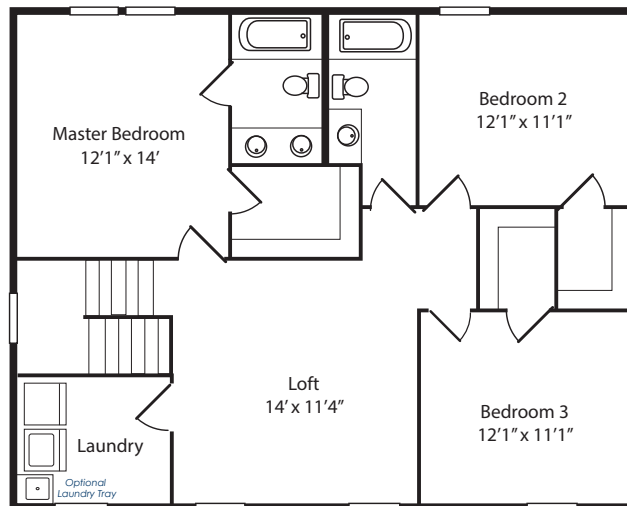
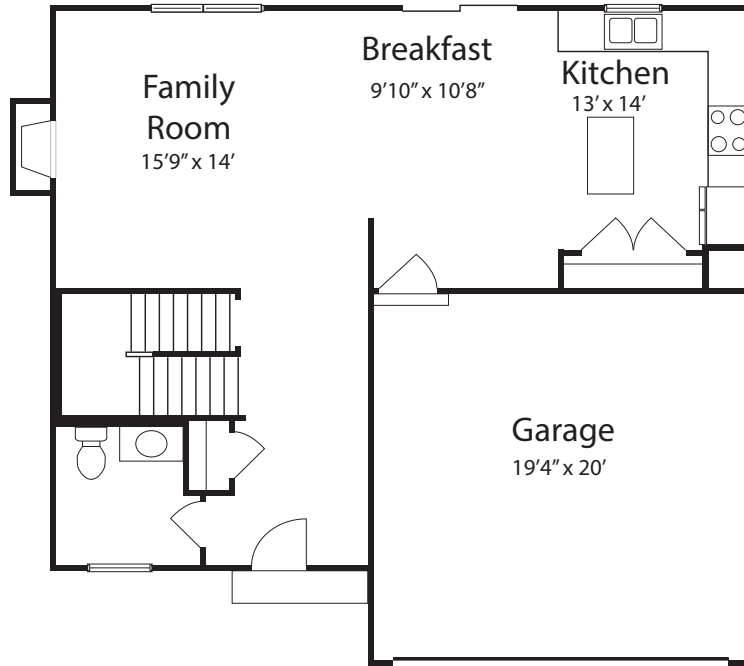


Because we are constantly improving our product, we reserve the right to change product features, brand names, dimensions, architectural details & design. This brochure is for illustrative purposes only & is in no way part of a legal, binding contract. Floor plans vary by elevation. Front entry garage is standard. Brick wrap will affect room dimensions.
©2023 John Henry Homes Inc.

Call (513) 607-3325 for more information
or visit us today at johnhenryhomes.com

1637 Kilbarron Drive • \$364,900

The Belmont



11025 Reed Hartman Hwy.
Cincinnati, OH 45242
513.745.9019
johnhenryhomes.com



Because we are constantly improving our product, we reserve the right to change product features, brand names, dimensions, architectural details & design. This brochure is for illustrative purposes only & is in no way part of a legal, binding contract. Floor plans vary by elevation. Front entry garage is standard. Brick wrap will affect room dimensions.
©2023 John Henry Homes Inc.