



Turning Leaf 200 • The Covina

5818 Turning Leaf Way • \$296,900



Design Features and Decorator Choices:

- Approximately 2623 Sq. Ft.
 - 9' 1st Floor Ceilings
 - 4 Bedrooms
 - 2 ½ Baths
 - Gas Fireplace
 - 2nd Floor Loft
- Double Bowl Vanity in Owner's Bath
 - Shower in Owner's Bath
 - Kitchen Island
 - 2nd Floor Laundry
 - Garage Door Opener
- 63 Estimated HERS Score
- Upgraded Aristokraft Cabinets
 - Crown Molding on Cabinets
 - Smooth Top Range
 - GE Spacesaver Microwave
 - Stainless Steel Appliances
- LVP Floors in Kitchen and Breakfast
- Moen Eva Chrome Vanity Faucets
 - Upgraded 6pd Carpet Pad
 - Pendant Lights at Island
- Recessed Style LED Lights in Kitchen
- Ceiling Fans in Great Room and Owner's



11025 Reed Hartman Hwy.
Cincinnati, OH 45242
513.745.9019
johnhenryhomes.com

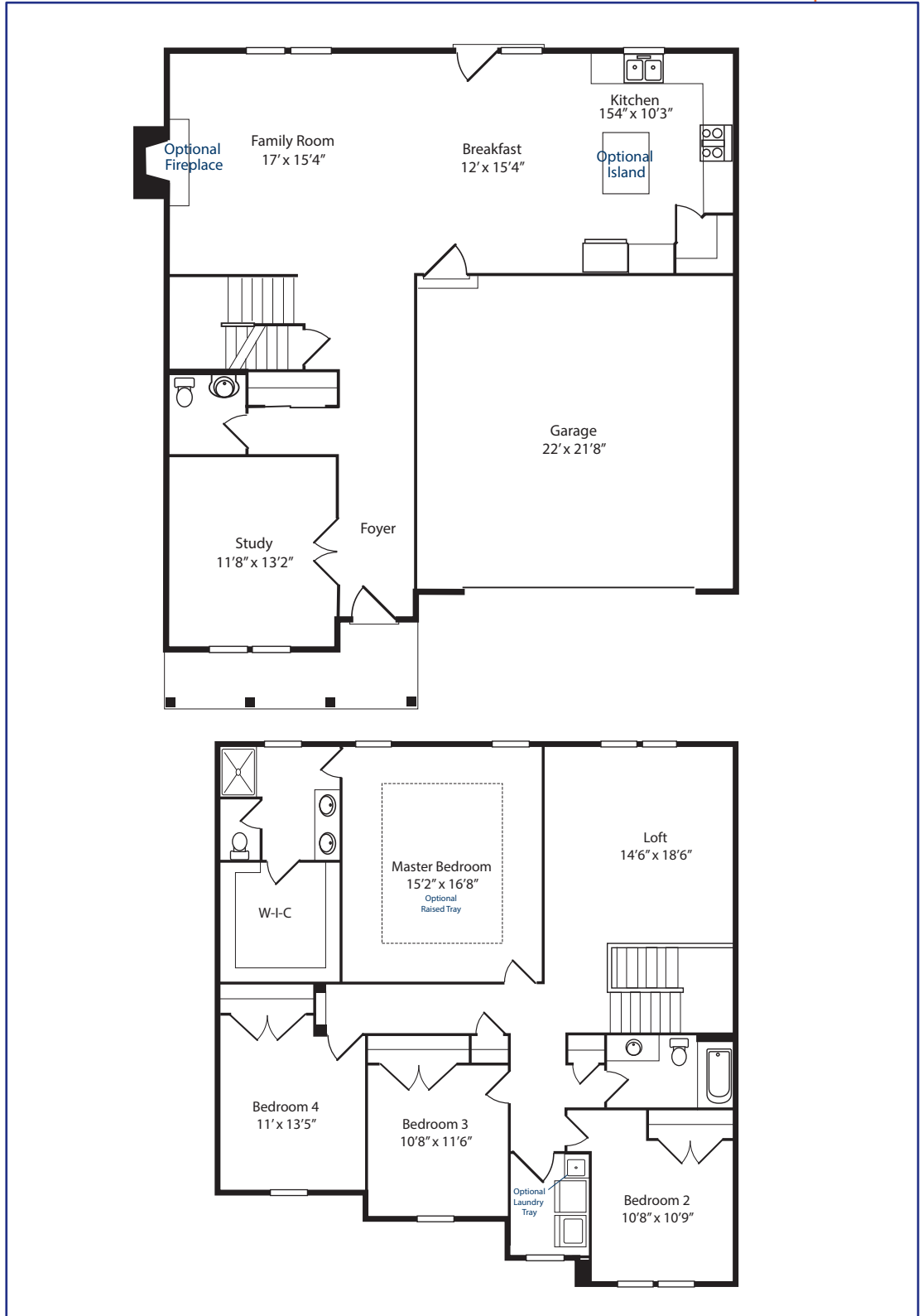


Because we are constantly improving our product, we reserve the right to change product features, brand names, dimensions, architectural details & design. This brochure is for illustrative purposes only & is in no way part of a legal, binding contract. Floor plans vary by elevation. Front entry garage is standard. Brick wrap will affect room dimensions.
©2019 John Henry Homes Inc.

Call (513) 240-6722 for more information
or visit us today at johnhenryhomes.com

5818 Turning Leaf Way • \$296,900

The Covina



11025 Reed Hartman Hwy.
Cincinnati, OH 45242
513.745.9019
johnhenryhomes.com



Because we are constantly improving our product, we reserve the right to change product features, brand names, dimensions, architectural details & design. This brochure is for illustrative purposes only & is in no way part of a legal, binding contract. Floor plans vary by elevation. Front entry garage is standard. Brick wrap will affect room dimensions.
©2019 John Henry Homes Inc.