

Turning Leaf 191 • The Emery

**5813 Turning Leaf Way • \$294,900**



***Features:***

- Approximately 1804 Sq. Ft.
- 9' 1st Floor Ceilings
- 12x15 Patio
- 4' Shower with Ceramic
- Gas Fireplace
- Mudroom with Cubbies
- 61 Estimated HERS Score

***Price Also Includes***

- Upgraded Aristokraft Cabinets
- Smooth Top Range
- Stainless Steel Appliances
- Rigid Core LVP in Kitchen
- Rigid Core LVP in Entry
- French Doors at Study
- Moen Eva Chrome Vanity Faucets
- Pendant Lights
- Recessed Lights
- Ceiling Fan in Great Room
- Ceiling Fan in Owner's Suite



11025 Reed Hartman Hwy.  
Cincinnati, OH 45242  
513.745.9019  
johnhenryhomes.com

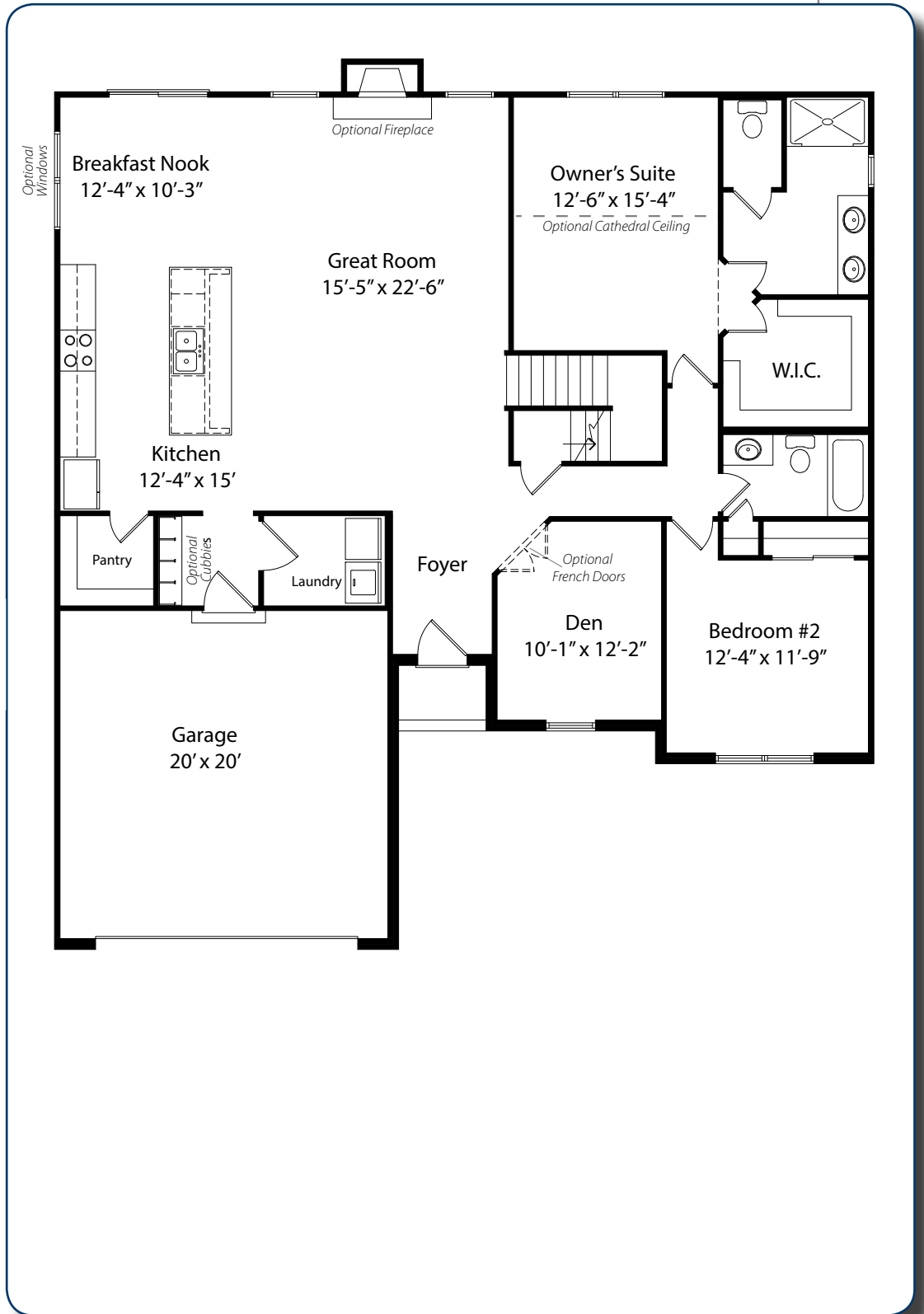


Because we are constantly improving our product, we reserve the right to change product features, brand names, dimensions, architectural details & design. This brochure is for illustrative purposes only & is in no way part of a legal, binding contract. Floor plans vary by elevation. Front entry garage is standard. Brick wrap will affect room dimensions. ©2018 John Henry Homes Inc.

**Call (513) 310-9779 for more information**  
or visit us today at [johnhenryhomes.com](http://johnhenryhomes.com)

# Turning Leaf 191 • \$294,900

## The Emery



11025 Reed Hartman Hwy.  
Cincinnati, OH 45242  
513.745.9019  
johnhenryhomes.com



Because we are constantly improving our product, we reserve the right to change product features, brand names, dimensions, architectural details & design. This brochure is for illustrative purposes only & is in no way part of a legal, binding contract. Floor plans vary by elevation. Front entry garage is standard. Brick wrap will affect room dimensions. ©2017 John Henry Homes Inc.