



Turning Leaf 191 • The Emery

5813 Turning Leaf Way • \$264,900



Features:

- Approximately 1804 Sq. Ft.
- 9' 1st Floor Ceilings
- 12x15 Patio
- 4' Shower with Ceramic
- Gas Fireplace
- Mudroom with Cubbies
- 61 Estimated HERS Score

Price Also Includes

- Upgraded Aristokraft Cabinets
- Smooth Top Range
- Stainless Steel Appliances
- Rigid Core LVP in Kitchen
- Rigid Core LVP in Entry
- French Doors at Study
- Moen Eva Chrome Vanity Faucets
- Pendant Lights
- Recessed Lights
- Ceiling Fan in Great Room
- Ceiling Fan in Owner's Suite



11025 Reed Hartman Hwy.
Cincinnati, OH 45242
513.745.9019
johnhenryhomes.com

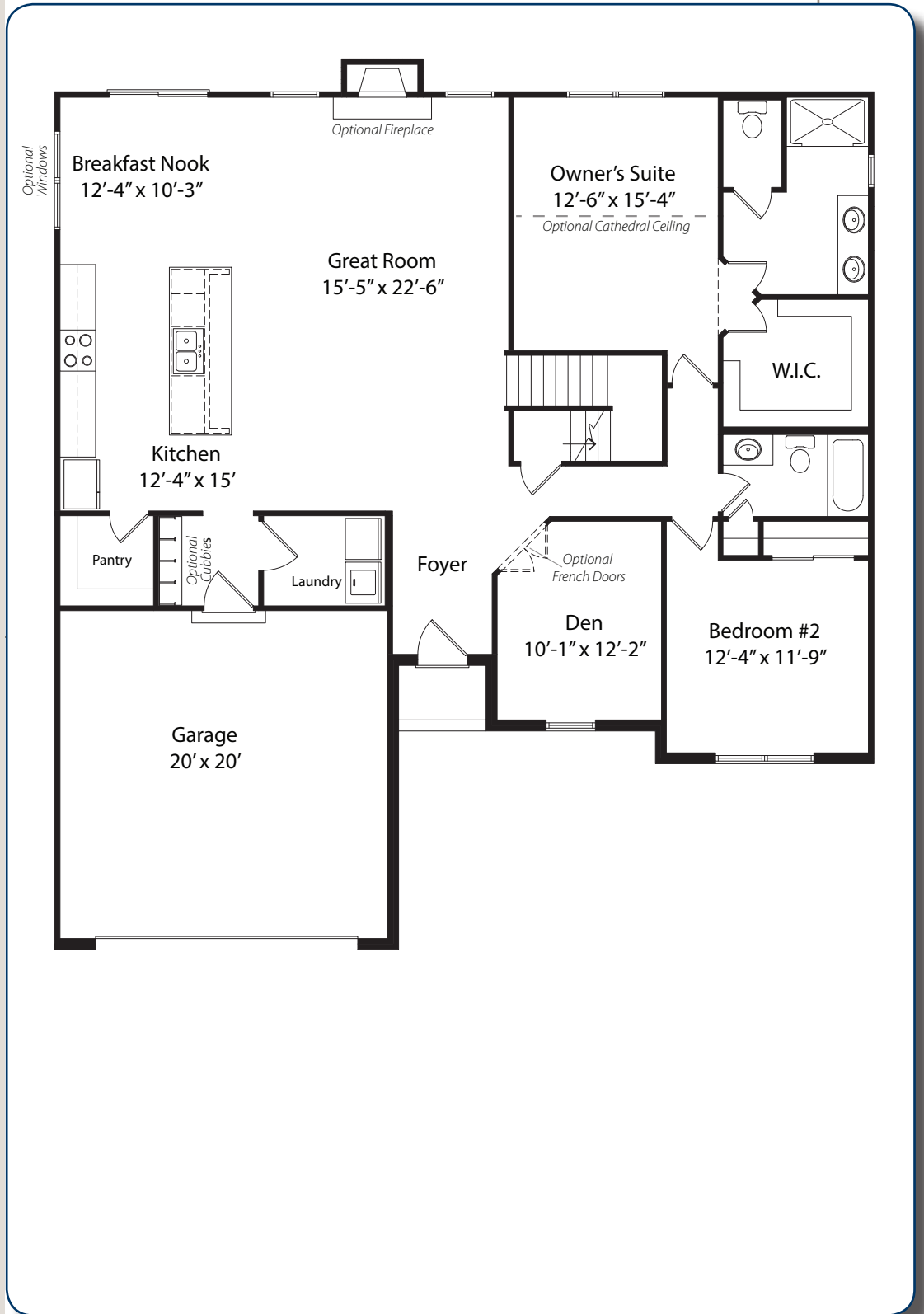


Because we are constantly improving our product, we reserve the right to change product features, brand names, dimensions, architectural details & design. This brochure is for illustrative purposes only & is in no way part of a legal, binding contract. Floor plans vary by elevation. Front entry garage is standard. Brick wrap will affect room dimensions. ©2017 John Henry Homes Inc.

Call (513) 448-9959 for more information
or visit us today at johnhenryhomes.com

Turning Leaf 191 • \$264,900

The Emery



11025 Reed Hartman Hwy.
Cincinnati, OH 45242
513.745.9019
johnhenryhomes.com



Because we are constantly improving our product, we reserve the right to change product features, brand names, dimensions, architectural details & design. This brochure is for illustrative purposes only & is in no way part of a legal, binding contract. Floor plans vary by elevation. Front entry garage is standard. Brick wrap will affect room dimensions. ©2017 John Henry Homes Inc.