



Turning Leaf 189 • The Monterey

5825 Turning Leaf Way • \$296,900



Design Features and Decorator Choices:

- Approximately 2878 Sq. Ft.
- Dimensional Style Shingles
 - 9' 1st Floor Ceilings
 - 2nd Floor Bonus Room
- 4' Shower with Ceramic Walls
 - Gas Fireplace
- Pendant Lights at Island
- Ceiling Fan in Great Room
- Ceiling Fan in Owner's Suite
- Recessed Style LED Lighting
- 63 Estimated HERS Score
- Upgraded Aristokraft Cabinets
 - Smooth Top Range
 - Spacesaver Microwave
 - Stainless Steel Appliances
- Rigid Core LVP in Kitchen
- Rigid Core LVP in Entry
 - French Doors at Study
- Moen Eva Chrome Vanity Faucets
 - Moen Sleek Kitchen Faucet



11025 Reed Hartman Hwy.
Cincinnati, OH 45242
513.745.9019
johnhenryhomes.com

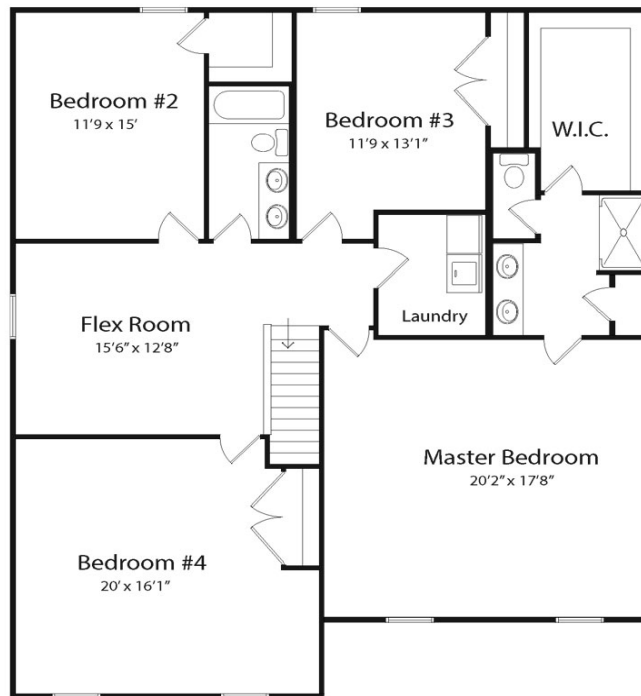
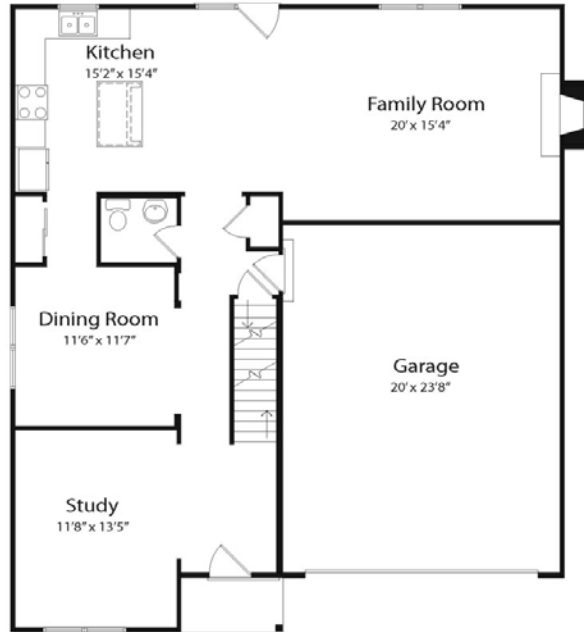


Because we are constantly improving our product, we reserve the right to change product features, brand names, dimensions, architectural details & design. This brochure is for illustrative purposes only & is in no way part of a legal, binding contract. Floor plans vary by elevation. Front entry garage is standard. Brick wrap will affect room dimensions.
©2019 John Henry Homes Inc.

Call (513) 240-6722 for more information
or visit us today at johnhenryhomes.com

Turning Leaf 189 • \$296,900

The Monterey



11025 Reed Hartman Hwy.
Cincinnati, OH 45242
513.745.9019
johnhenryhomes.com



Because we are constantly improving our product, we reserve the right to change product features, brand names, dimensions, architectural details & design. This brochure is for illustrative purposes only & is in no way part of a legal, binding contract. Floor plans vary by elevation. Front entry garage is standard. Brick wrap will affect room dimensions.
©2019 John Henry Homes Inc.