



Turning Leaf 198 • The Covina

5810 Turning Leaf Way • \$274,900



***Features:***

- Approximately 2627 Sq. Ft.
- 9' 1st Floor Ceilings
- Gas Fireplace
- 12x15 Patio
- Dimensional Style Shingles
- Raised Tray Ceiling in Owner's
- Garage Door Opener
- 63 Estimated HERS Score

***Price Also Includes***

- Upgraded Aristokraft Cabinets
- Crown Molding on Cabinets
- Smooth Top Range
- Stainless Steel Appliances
- Rigid Core LVP Floors in Kitchen
- Moen Eva Chrome Vanity Faucets
- Upgraded 6pd Carpet Pad
- Ice Maker Line
- Pendant Lights
- Recessed Lights
- Ceiling Fan in Great Room
- Ceiling Fan in Owner's Suite



11025 Reed Hartman Hwy.  
Cincinnati, OH 45242  
513.745.9019  
johnhenryhomes.com

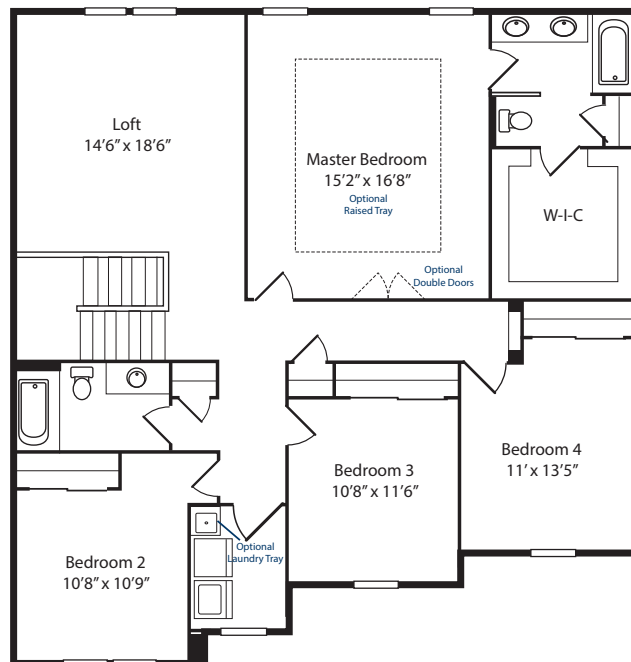
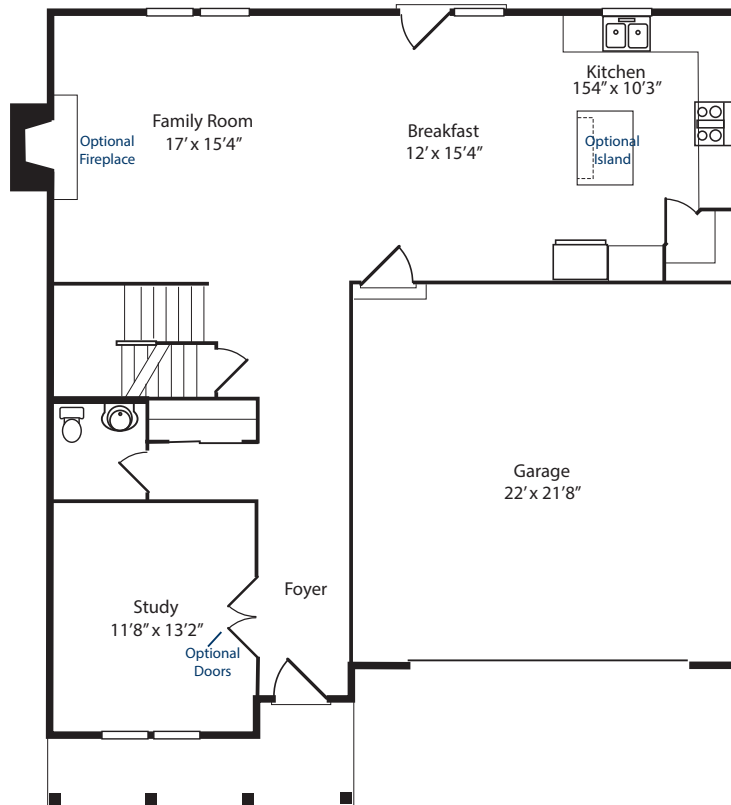


Because we are constantly improving our product, we reserve the right to change product features, brand names, dimensions, architectural details & design. This brochure is for illustrative purposes only & is in no way part of a legal, binding contract. Floor plans vary by elevation. Front entry garage is standard. Brick wrap will affect room dimensions. ©2017 John Henry Homes Inc.

**Call (513) 448-9959 for more information**  
or visit us today at [johnhenryhomes.com](http://johnhenryhomes.com)

5810 Turning Leaf Way • \$274,900

## The Covina



11025 Reed Hartman Hwy.  
Cincinnati, OH 45242  
513.745.9019  
johnhenryhomes.com



Because we are constantly improving our product, we reserve the right to change product features, brand names, dimensions, architectural details & design. This brochure is for illustrative purposes only & is in no way part of a legal, binding contract. Floor plans vary by elevation. Front entry garage is standard. Brick wrap will affect room dimensions. ©2017 John Henry Homes Inc.