



Treetops of Madeira 1 • The Emma  
**7201 Treetops Lane • \$649,900**



***Features:***

- Approximately 3115 Sq. Ft.
- Walkout Lower Level
- 2 Decks
- 10' Lower Level
- 9' 1st Floor Ceilings
- 10' Great Room
- Spa Like Walk-in Shower
- Gas Fireplace
- Mudroom with Cubbies
- Oak Treads on Steps
- 57 Estimated HERS Score

***Price Also Includes***

- Aristokraft Durham Cabinets
- Quiet Close Kitchen Cabinets
- Gourmet Kitchen
- Quartz Countertops
- Designer Hood
- Black Stainless Appliances
- American Scrape Hardwood 1st Floor
- Designer Backsplash
- Moen Matte Black Faucets
- Pendant Lights
- Recessed Lights
- Ceiling Fan in Great Room
- Ceiling Fan in Owner's Suite



11025 Reed Hartman Hwy.  
Cincinnati, OH 45242  
513.745.9019  
johnhenryhomes.com

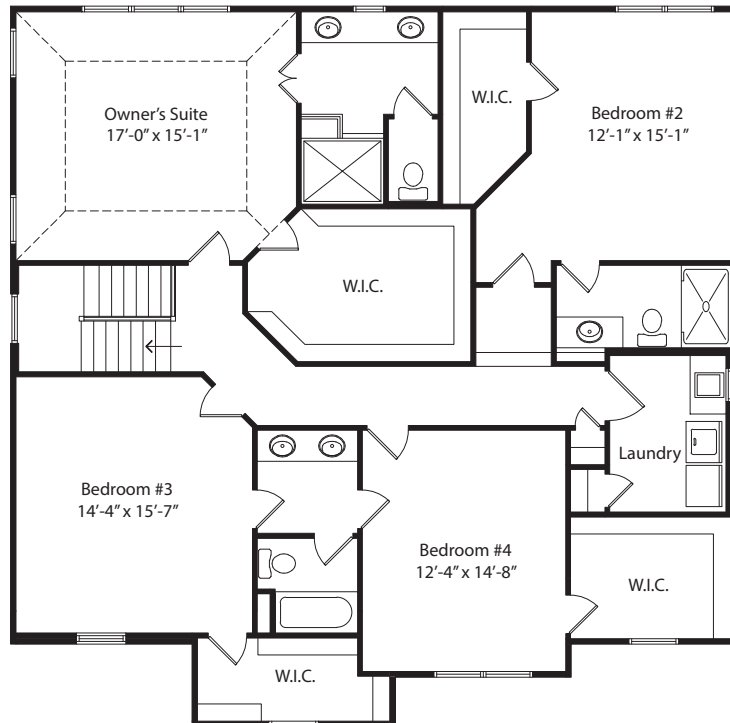
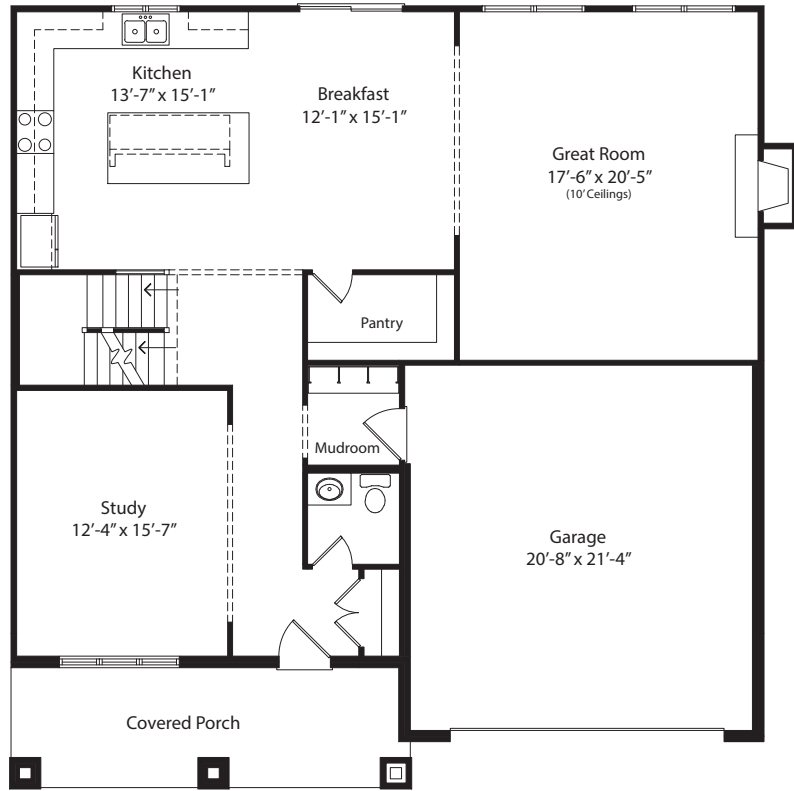


Because we are constantly improving our product, we reserve the right to change product features, brand names, dimensions, architectural details & design. This brochure is for illustrative purposes only & is in no way part of a legal, binding contract. Floor plans vary by elevation. Front entry garage is standard. Brick wrap will affect room dimensions.  
©2018 John Henry Homes Inc.

**Call (513) 226-7219 for more information**  
or visit us today at [johnhenryhomes.com](http://johnhenryhomes.com)

# Treetops of Madeira 1 • \$649,900

## The Emma



11025 Reed Hartman Hwy.  
Cincinnati, OH 45242  
513.745.9019  
johnhenryhomes.com



Because we are constantly improving our product, we reserve the right to change product features, brand names, dimensions, architectural details & design. This brochure is for illustrative purposes only & is in no way part of a legal, binding contract. Floor plans vary by elevation. Front entry garage is standard. Brick wrap will affect room dimensions.  
©2018 John Henry Homes Inc.