



Treetops of Madeira 1 • The Emma
7201 Treetops Lane • \$649,900



Design Features and Decorator Choices:

- Approximately 3115 Sq. Ft.
 - 4 Bedrooms
 - 3 ½ Baths
- Walkout Lower Level with 10' Ceilings
 - 9' 1st Floor Ceilings
 - 10 Ceilings in Great Room
- Spa Like Shower in Owner's Bath
- Decorative Ceiling in Owner's Suite
 - Gas Fireplace
- Mudroom with Cubbies
 - Oak Treads on Steps
- Large Walk-in Closets in all Bedrooms
 - 57 Estimated HERS Score
- Aristokraft Durham Cabinets
- Quiet Close Kitchen Cabinets
 - Gourmet Kitchen
 - Quartz Countertops
- Designer Hood above Range
 - Stainless Steel Appliances
- American Scrape Hardwood 1st Floor
 - Designer Kitchen Backsplash
 - Moen Matte Black Faucets
 - Pendant Lights at Island
 - Recessed Style LED Lights
 - Ceiling Fan in Great Room
 - Ceiling Fan in Owner's Suite



11025 Reed Hartman Hwy.
Cincinnati, OH 45242
513.745.9019
johnhenryhomes.com

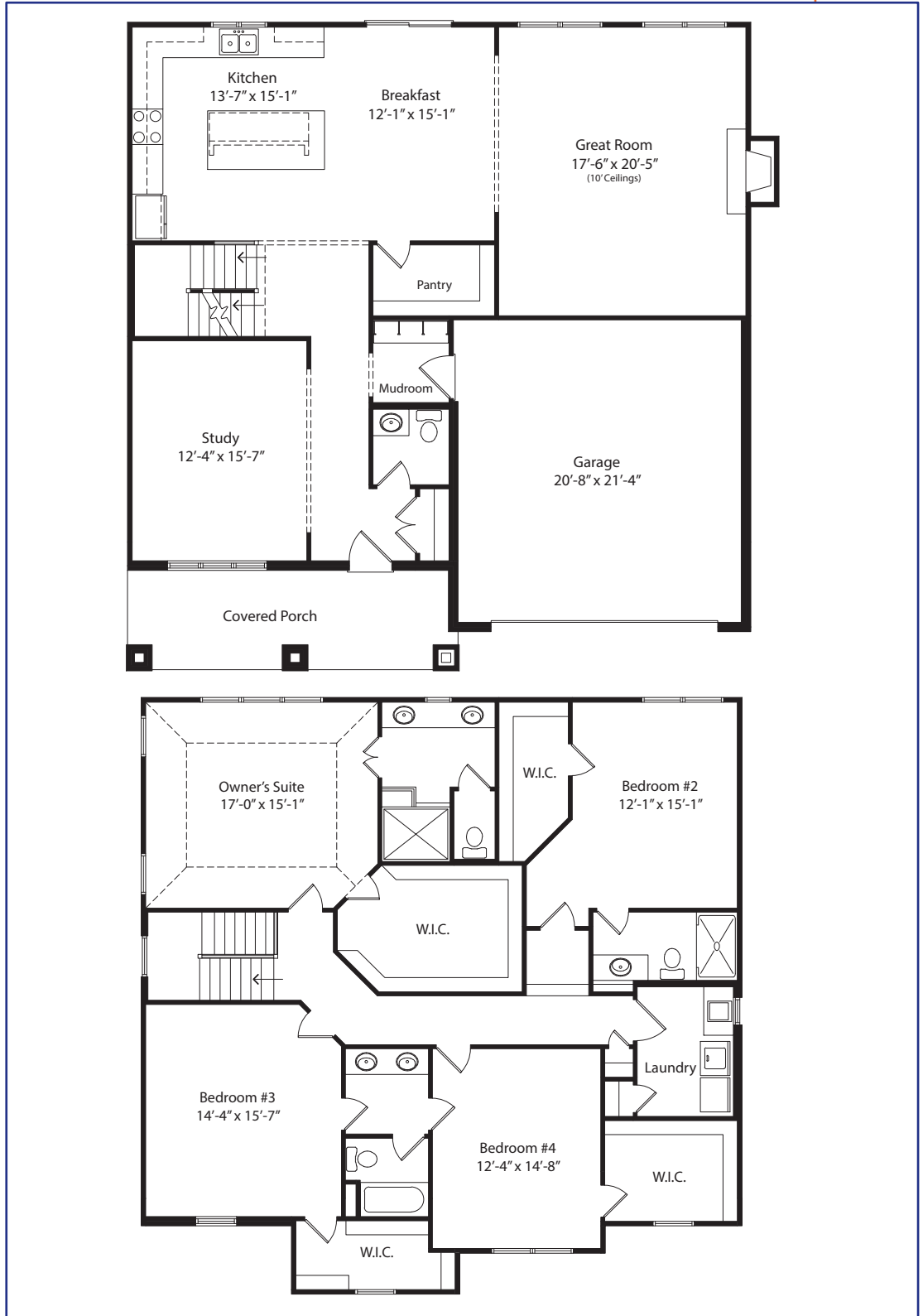


Because we are constantly improving our product, we reserve the right to change product features, brand names, dimensions, architectural details & design. This brochure is for illustrative purposes only & is in no way part of a legal, binding contract. Floor plans vary by elevation. Front entry garage is standard. Brick wrap will affect room dimensions.
©2019 John Henry Homes Inc.

Call (513) 226-7219 for more information
or visit us today at johnhenryhomes.com

Treetops of Madeira 1 • \$649,900

The Emma



11025 Reed Hartman Hwy.
Cincinnati, OH 45242
513.745.9019
johnhenryhomes.com



Because we are constantly improving our product, we reserve the right to change product features, brand names, dimensions, architectural details & design. This brochure is for illustrative purposes only & is in no way part of a legal, binding contract. Floor plans vary by elevation. Front entry garage is standard. Brick wrap will affect room dimensions. ©2019 John Henry Homes Inc.