



Trails of Four Bridges 352 • The William II
6085 Wiltshire Drive • \$424,900



Design Features and Decorator Choices:

- Approximately 2059 Sq. Ft.
 - 9' 1st Floor Ceilings
 - 9' Lower Level Ceilings
 - 10' Great Room Ceilings
- Tray Ceiling with Crown in Dining
 - Luxury Walk-in Shower
 - Gas Fireplace with Stone
 - Smooth Ceilings
 - Pendant Lights
 - Recessed Lights
 - Ceiling Fan in Great Room
- Ceiling Fan in Owner's Suite
 - Mudroom with Cubbies
- Upgraded Aristokraft Cabinets
 - Quartz Countertops
 - Gas Range
 - Stainless Steel Appliances
- Hardwood Floors in Kitchen
- Hardwood Floors in Dining
- Hardwood Floors in Great Room
- Moen Eva Chrome Vanity Faucets
 - Designer Back Splash
- Tile Floors in Master Bath
- Tile Floors in Hall Bath
- Tile Floors in Laundry



11025 Reed Hartman Hwy.
Cincinnati, OH 45242
513.745.9019
johnhenryhomes.com

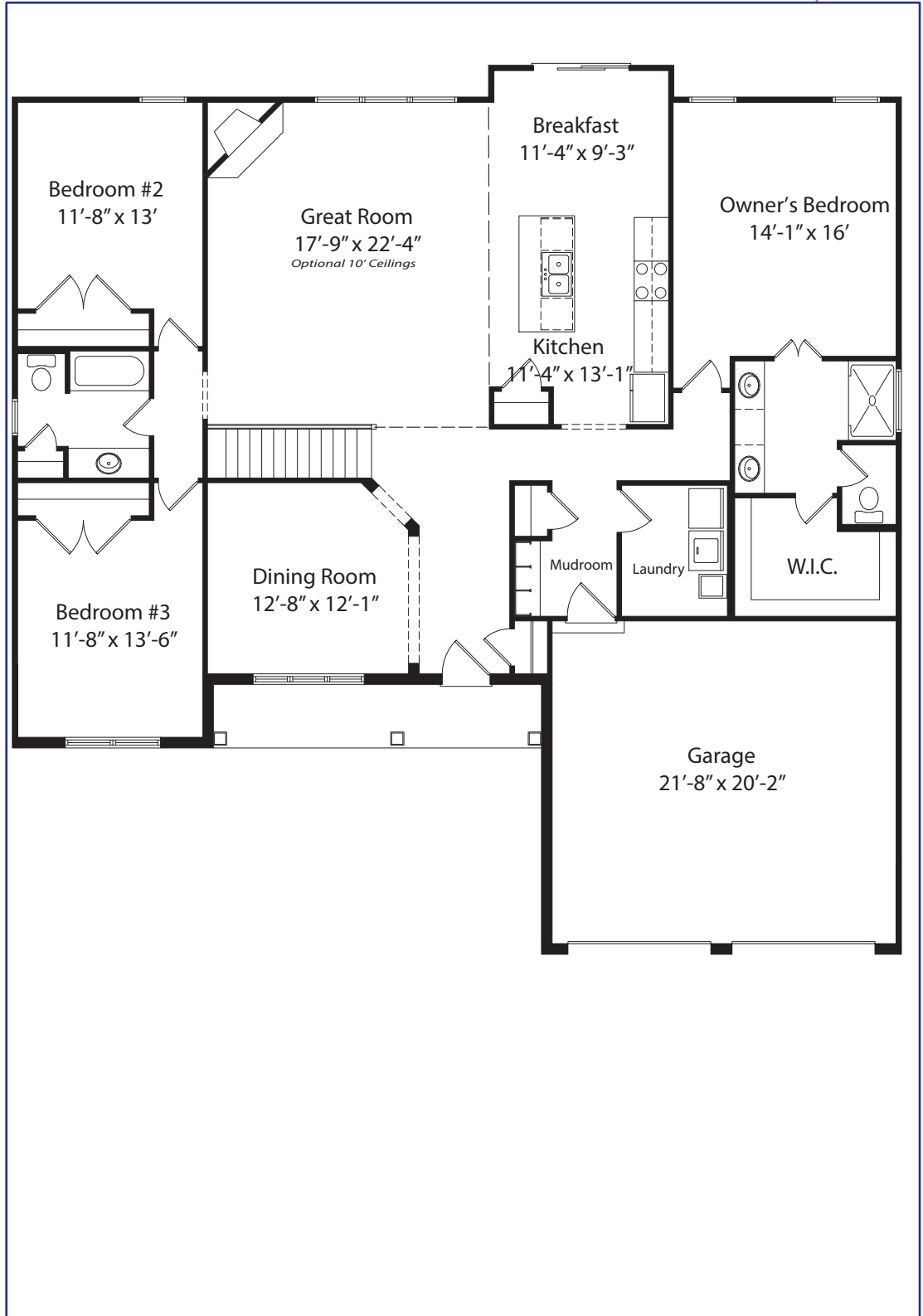


Because we are constantly improving our product, we reserve the right to change product features, brand names, dimensions, architectural details & design. This brochure is for illustrative purposes only & is in no way part of a legal, binding contract. Floor plans vary by elevation. Front entry garage is standard. Brick wrap will affect room dimensions.
©2019 John Henry Homes Inc.

Call (513) 607-3325 for more information
or visit us today at johnhenryhomes.com

Trails of Four Bridges 352 • \$424,900

The William II



11025 Reed Hartman Hwy.
Cincinnati, OH 45242
513.745.9019
johnhenryhomes.com



Because we are constantly improving our product, we reserve the right to change product features, brand names, dimensions, architectural details & design. This brochure is for illustrative purposes only & is in no way part of a legal, binding contract. Floor plans vary by elevation. Front entry garage is standard. Brick wrap will affect room dimensions. ©2019 John Henry Homes Inc.