



Saddlebrook 142 • The Belmont

**5609 Shetland Court • \$231,900**



### Design Features and Decorator Choices:

- Approximately 1804 Sq. Ft.
  - 3 Bedrooms
  - 2 ½ Baths
  - 2nd Floor Loft
- Double Bowl Vanity in Owner's Bath
  - Kitchen Island
  - 2nd Floor Laundry
  - Pendant Lights at Island
- Recessed Style LED Lights in Kitchen
- Ceiling Fans in Great Room and Owner's
  - Garage Door Opener
- 68 Estimated HERS Score
- Upgraded Aristokraft Cabinets
  - Crown Molding on Cabinets
    - Smooth Top Range
  - GE Spacesaver Microwave
  - Stainless Steel Appliances
- LVP Floors in Kitchen and Breakfast
- Moen Eva Chrome Vanity Faucets
- Upgraded 6pd Carpet Pad



11025 Reed Hartman Hwy.  
Cincinnati, OH 45242  
513.745.9019  
johnhenryhomes.com

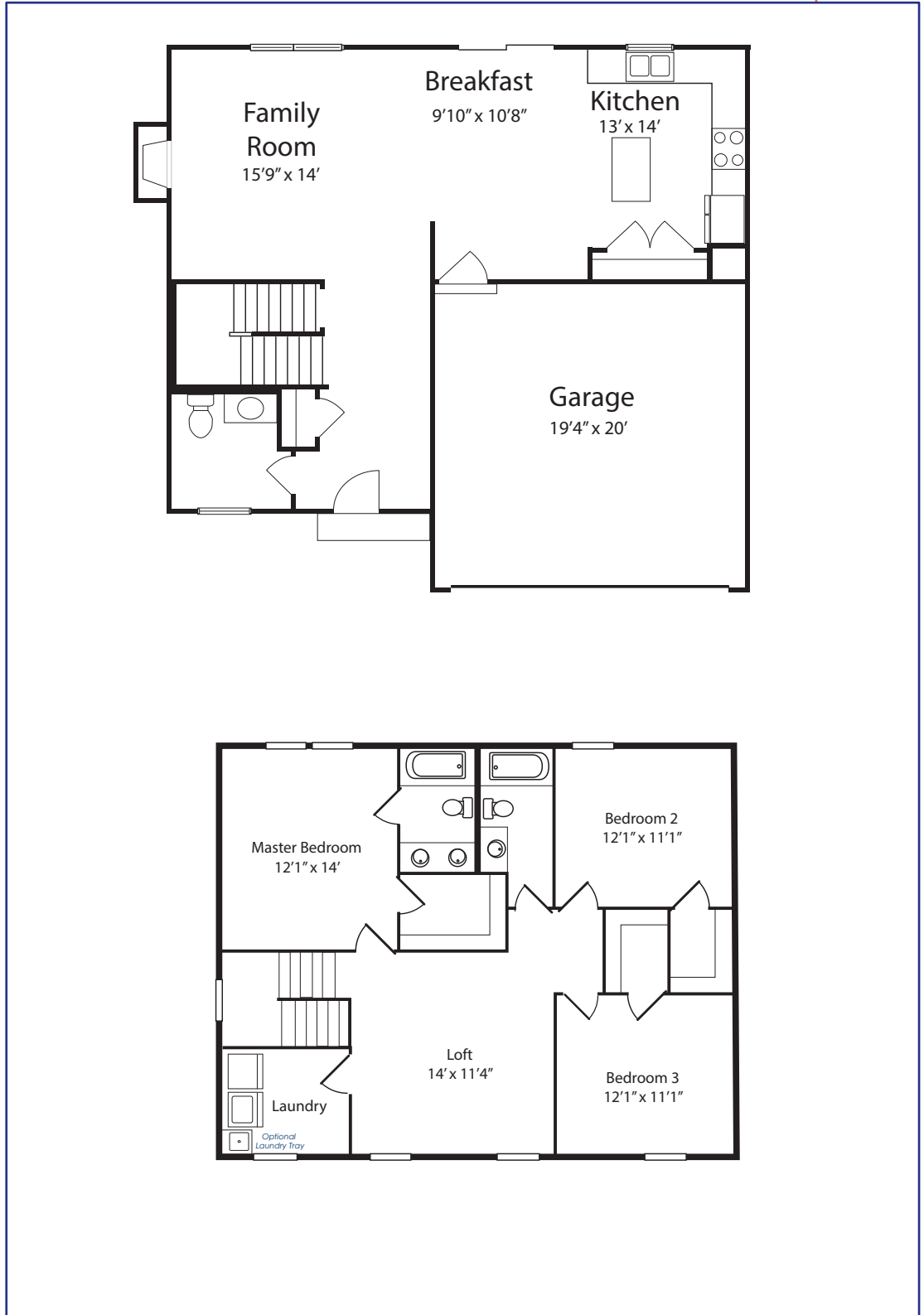


Because we are constantly improving our product, we reserve the right to change product features, brand names, dimensions, architectural details & design. This brochure is for illustrative purposes only & is in no way part of a legal, binding contract. Floor plans vary by elevation. Front entry garage is standard. Brick wrap will affect room dimensions.  
©2019 John Henry Homes Inc.

**Call (513) 240-6722 for more information**  
or visit us today at [johnhenryhomes.com](http://johnhenryhomes.com)

# 5609 Shetland Court • \$231,900

## The Belmont



11025 Reed Hartman Hwy.  
Cincinnati, OH 45242  
513.745.9019  
johnhenryhomes.com



Because we are constantly improving our product, we reserve the right to change product features, brand names, dimensions, architectural details & design. This brochure is for illustrative purposes only & is in no way part of a legal, binding contract. Floor plans vary by elevation. Front entry garage is standard. Brick wrap will affect room dimensions. ©2019 John Henry Homes Inc.