

The Enclave at Roberts Park 90 • The Covina  
**3625 Capital Ave • \$412,900**



*Features:*

- Approximately 2629 Sq. Ft.
- Bonus Room
- 9' 1st Floor
- 3 Car Garage
- Gas Fireplace
- Coffered Ceiling in Master
- 95% Efficient Furnace
- 10 Year Structural Warranty

*Price Also Includes*

- Upgraded Cabinets
- Gourmet Kitchen
- Granite Countertops
- Hardwood Kitchen
- Stainless Steel Appliances
- Glass Backsplash
- Upgraded Moen Faucets
- Recess Kitchen Lights
- Pendant Lights at Island
- Overhead Bedroom Lights
- Ice Maker Line
- Ceramic Baths and Laundry



11025 Reed Hartman Hwy.  
Cincinnati, OH 45242  
513.745.9019  
johnhenryhomes.com

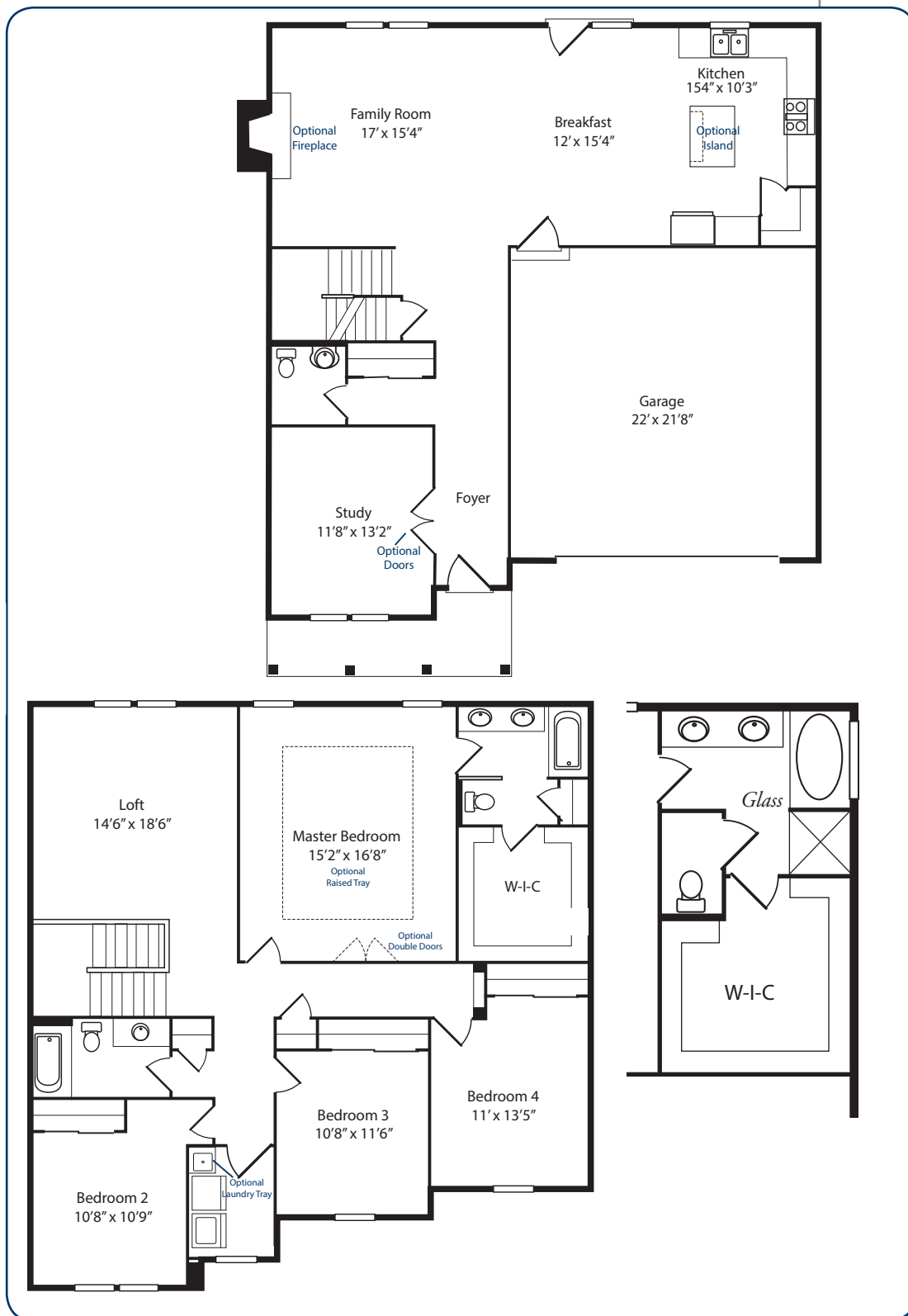


Because we are constantly improving our product, we reserve the right to change product features, brand names, dimensions, architectural details & design. This brochure is for illustrative purposes only & is in no way part of a legal, binding contract. Floor plans vary by elevation. Front entry garage is standard. Brick wrap will affect room dimensions. ©2016 John Henry Homes Inc.

**Call (513) 310-9779 for more information**  
or visit us today at [johnhenryhomes.com](http://johnhenryhomes.com)

3625 Capital Ave • \$412,900

## The Covina



11025 Reed Hartman Hwy.  
Cincinnati, OH 45242  
513.745.9019  
johnhenryhomes.com



Because we are constantly improving our product, we reserve the right to change product features, brand names, dimensions, architectural details & design. This brochure is for illustrative purposes only & is in no way part of a legal, binding contract. Floor plans vary by elevation. Front entry garage is standard. Brick wrap will affect room dimensions. ©2016 John Henry Homes Inc.