



The Enclave at Roberts Park 83 • The Austin
3614 Capital Avenue • \$449,900



Features:

- Approximately 3251 Sq. Ft.
- Walkout Basement
- 12x17 Wood Deck
- 2 Story Stone Fireplace
- 1st Floor In-Law Suite
- 9' 1st Floor
- 3rd Car Carriage Garage
- Mudroom Cubbies
- Smooth Ceilings
- 95% Efficient Furnace
- 10 Year Structural Warranty

Price Also Includes

- Aristokraft Winstead Cabinets
- Gourmet Kitchen
- Quartz Countertops
- Kohler Farmhouse Sink
- Chimney Style Hood
- Hardwood Kitchen
- Stainless Steel Appliances
- Decorative Backsplash
- Pendant Lights at Island
- Ceramic Baths and Laundry



11025 Reed Hartman Hwy.
Cincinnati, OH 45242
513.745.9019
johnhenryhomes.com

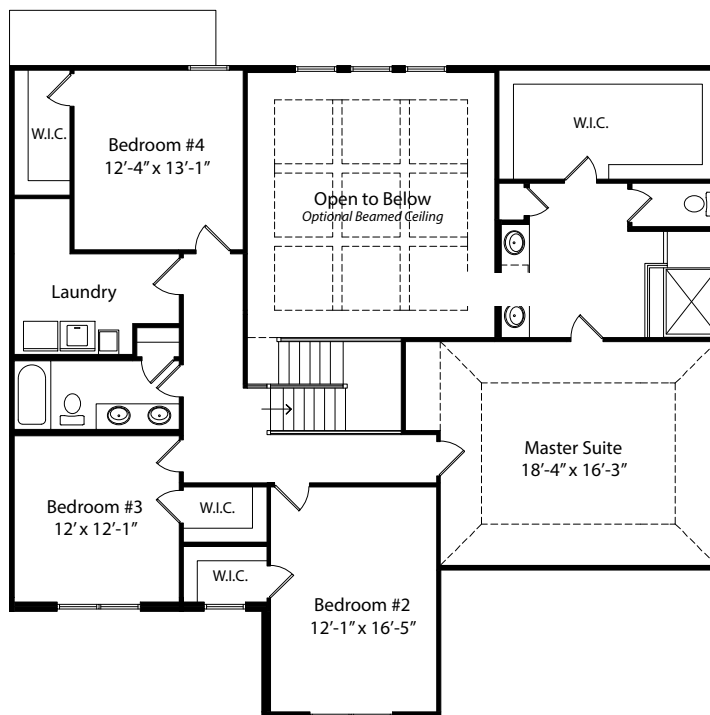
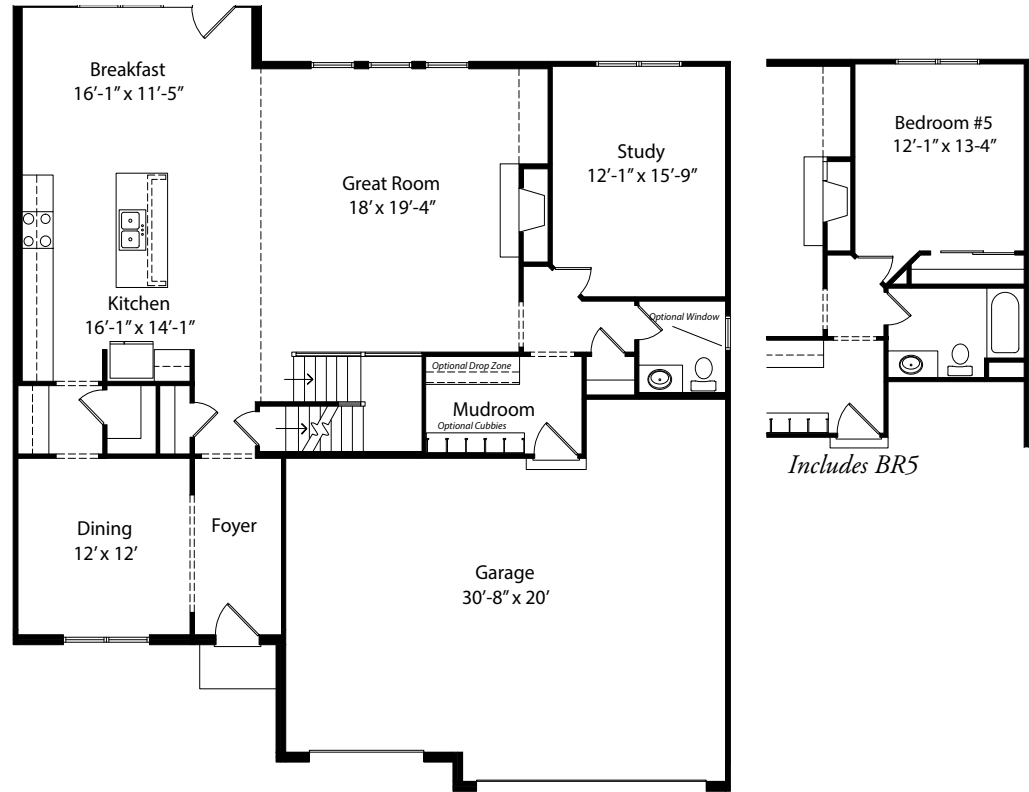


Because we are constantly improving our product, we reserve the right to change product features, brand names, dimensions, architectural details & design. This brochure is for illustrative purposes only & is in no way part of a legal, binding contract. Floor plans vary by elevation. Front entry garage is standard. Brick wrap will affect room dimensions. ©2017 John Henry Homes Inc.

Call (513)448-9959 for more information
or visit us today at johnhenryhomes.com

3614 Capital Avenue • \$449,900

The Austin



11025 Reed Hartman Hwy.
Cincinnati, OH 45242
513.745.9019
johnhenryhomes.com



Because we are constantly improving our product, we reserve the right to change product features, brand names, dimensions, architectural details & design. This brochure is for illustrative purposes only & is in no way part of a legal, binding contract. Floor plans vary by elevation. Front entry garage is standard. Brick wrap will affect room dimensions. ©2017 John Henry Homes Inc.