

Encalve at Roberts Park 78 • The Emery
3644 Capital Avenue • \$414,900



Features:

- Approximately 1804 Sq. Ft.
- 9' 1st Floor Ceilings
- Walk-Out Basement
- 12x17 Deck
- Luxury Walk-in Shower
- Gas Fireplace
- Pendant Lights
- Recessed Lights
- Ceiling Fan in Great Room
- Ceiling Fan in Owner's Suite
- Mudroom with Cubbies

Price Also Includes

- Upgraded Aristokraft Cabinets
- Quartz Countertops
- Gas Range
- Stainless Steel Appliances
- Hardwood Floors in Kitchen
- Hardwood Floors in Great Room
- Hardwood Floors in Study
- Moen Eva Chrome Vanity Faucets
- Designer Back Splash
- Tile Floors in Master Bath
- Tile Floors in Hall Bath
- Tile Floors in Laundry



11025 Reed Hartman Hwy.
Cincinnati, OH 45242
513.745.9019
johnhenryhomes.com

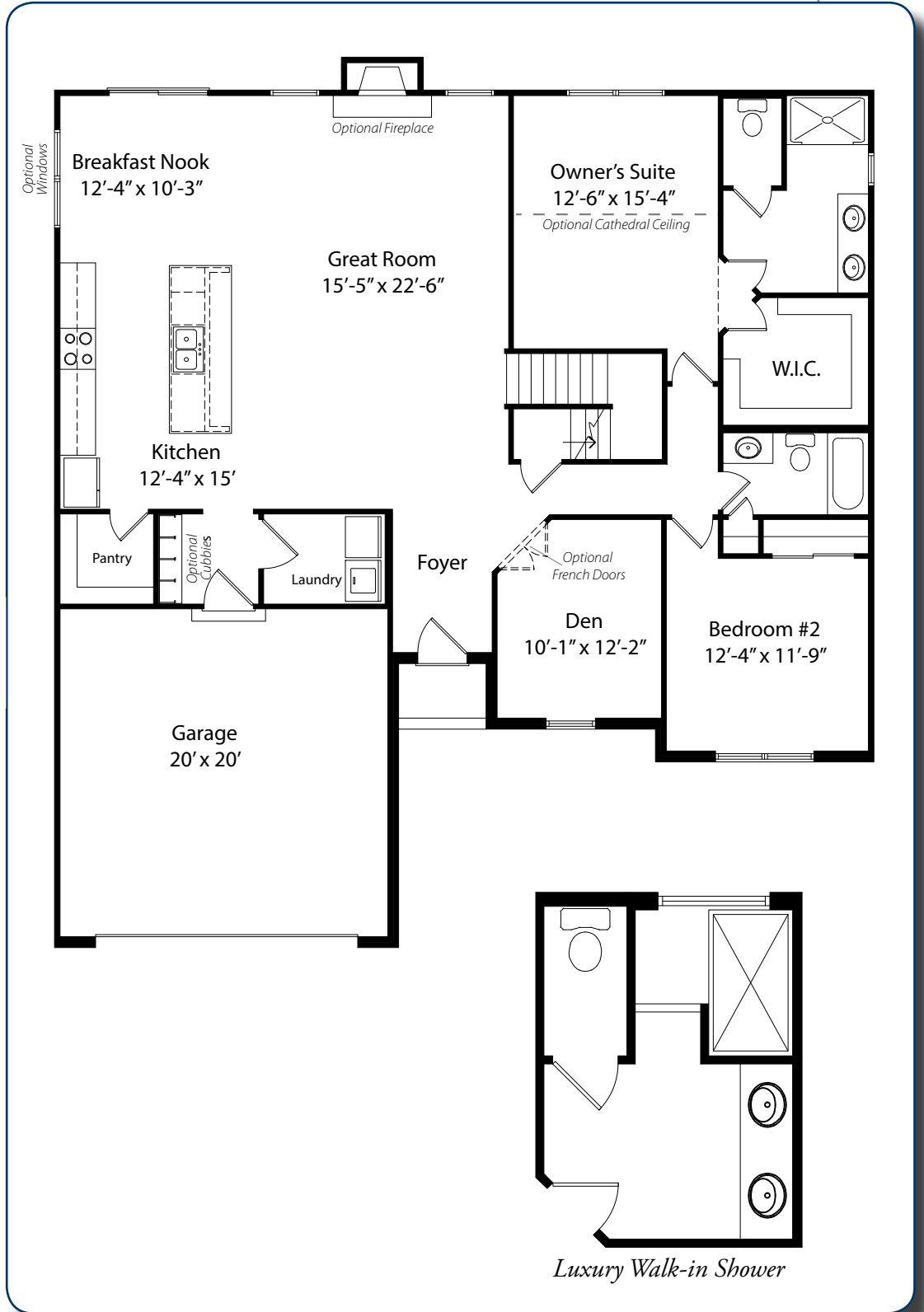


Because we are constantly improving our product, we reserve the right to change product features, brand names, dimensions, architectural details & design. This brochure is for illustrative purposes only & is in no way part of a legal, binding contract. Floor plans vary by elevation. Front entry garage is standard. Brick wrap will affect room dimensions. ©2018 John Henry Homes Inc.

Call (513) 310-9779 for more information
or visit us today at johnhenryhomes.com

Enclave at Roberts Park 78 • \$414,900

The Emery



11025 Reed Hartman Hwy.
Cincinnati, OH 45242
513.745.9019
johnhenryhomes.com



Because we are constantly improving our product, we reserve the right to change product features, brand names, dimensions, architectural details & design. This brochure is for illustrative purposes only & is in no way part of a legal, binding contract. Floor plans vary by elevation. Front entry garage is standard. Brick wrap will affect room dimensions. ©2017 John Henry Homes Inc.