

The Reserves of Carmelle 138 • The Edinburgh
4392 Wynfall Court • \$509,900



Features:

- Approximately 4054 Sq. Ft.
- Finished Basement
- Sunroom
- 4 Full Baths
- Oversized Owner's Shower
- 9' 1st Floor
- 3 Car Garage
- Gas Fireplace
- Coffered Ceiling in Master
- Smooth Ceilings
- 95% Efficient Furnace
- 10 Year Structural Warranty

Price Also Includes

- Upgraded Cabinets
- Gourmet Kitchen
- Granite Countertops
- Hardwood Kitchen
- Stainless Steel Appliances
- Glass Backsplash
- Upgraded Moen Faucets
- Recessed Kitchen Lights
- Pendant Lights at Island
- Stone Fireplace
- Ice Maker Line
- Ceramic Baths and Laundry



11025 Reed Hartman Hwy.
Cincinnati, OH 45242
513.745.9019
johnhenryhomes.com

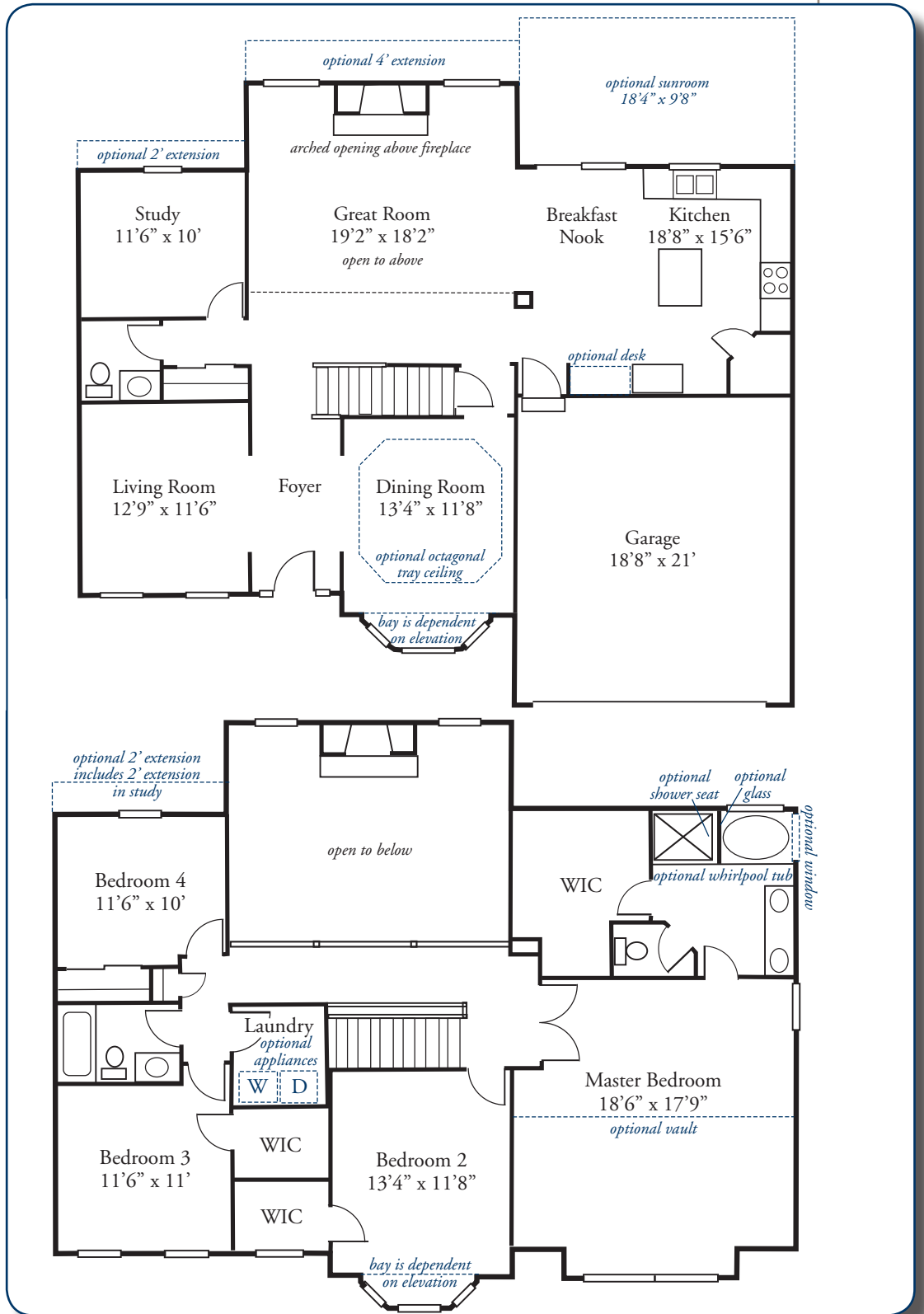


Because we are constantly improving our product, we reserve the right to change product features, brand names, dimensions, architectural details & design. This brochure is for illustrative purposes only & is in no way part of a legal, binding contract. Floor plans vary by elevation. Front entry garage is standard. Brick wrap will affect room dimensions. ©2016 John Henry Homes Inc.

Call (513) 310-9779 for more information
or visit us today at johnhenryhomes.com

4392 Wynfall Court • \$509,900

The Edinburgh



11025 Reed Hartman Hwy.
Cincinnati, OH 45242
513.745.9019
johnhenryhomes.com



Because we are constantly improving our product, we reserve the right to change product features, brand names, dimensions, architectural details & design. This brochure is for illustrative purposes only & is in no way part of a legal, binding contract. Floor plans vary by elevation. Front entry garage is standard. Brick wrap will affect room dimensions. ©2016 John Henry Homes Inc.