



## Parkwalk • The Charlotte

**\$274,900**  
**2815 Parkwalk**



**\$267,900**  
**2850 Parkwalk**



**\$272,900**  
**2854 Parkwalk**



**\$266,900**  
**2866 Parkwalk**



### *Features:*

- Approximately 1836 Sq. Ft.
- 9' 1st Floor
- Vaulted Great Room
- Gas Fireplace
- 95% Efficient Furnace
- 10 Year Structural Warranty
- HERS Energy Rating
- HOA Yard Maintenance
- HOA Snow Removal
- 10 Minutes to Downtown
- Minutes from I-74

### *Price Also Includes*

- Aristokraft Birch Cabinets
- Granite Countertops
- Hardwood Kitchen
- Stainless Steel Appliances
- Decorative Backsplash
- Upgraded Moen Faucets
- Recess Kitchen Lights
- Overhead Bedroom Lights
- Ice Maker Line
- Ceramic Floors Owner's Bath
- Ceramic Floors Hall Bath
- Ceramic Floors Laundry



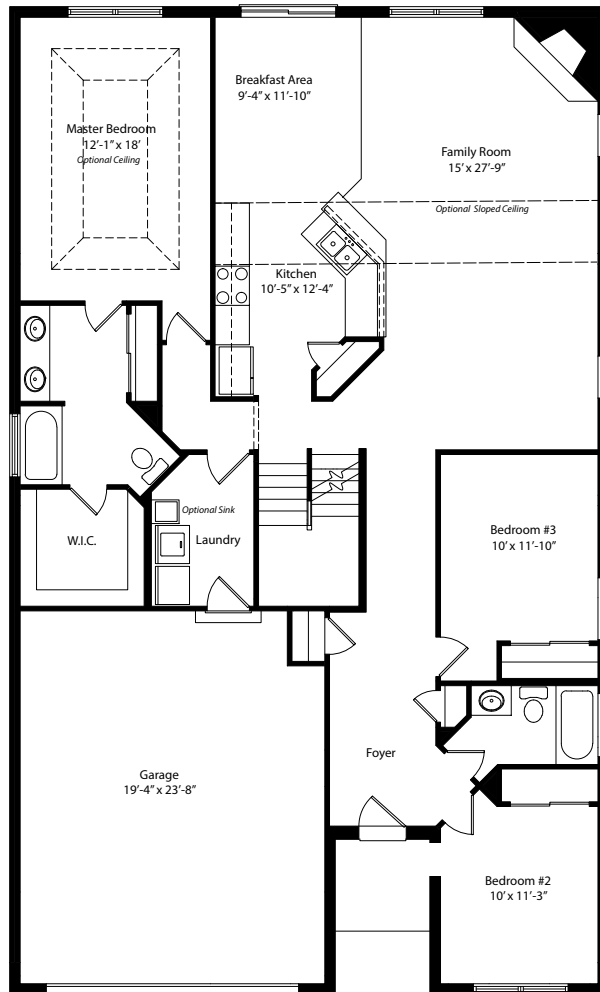
11025 Reed Hartman Hwy.  
Cincinnati, OH 45242  
513.745.9019  
johnhenryhomes.com



**Call (513) 317-6042 for more information**  
or visit us today at [johnhenryhomes.com](http://johnhenryhomes.com)

Because we are constantly improving our product, we reserve the right to change product features, brand names, dimensions, architectural details & design. This brochure is for illustrative purposes only & is in no way part of a legal, binding contract. Floor plans vary by elevation. Front entry garage is standard. Brick wrap will affect room dimensions. ©2017 John Henry Homes Inc.

# Parkwalk • The Charlotte



11025 Reed Hartman Hwy.  
Cincinnati, OH 45242  
513.745.9019  
johnhenryhomes.com



Because we are constantly improving our product, we reserve the right to change product features, brand names, dimensions, architectural details & design. This brochure is for illustrative purposes only & is in no way part of a legal, binding contract. Floor plans vary by elevation. Front entry garage is standard. Brick wrap will affect room dimensions. ©2017 John Henry Homes Inc.