



Oaks of West Chester 100 • The Gabrielle

7190 Susan Springs Drive • \$674,900



Design Features and Decorator Choices:

- Approximately 2360 Sq. Ft.
- 3 Bedrooms
- 2 Bathrooms
- 9' First Floor Ceilings
- 14' x 10' Covered Patio
- Gas Fireplace
- 2 Car Side Entry Garage with Carriage
- Raised Ceiling in Primary Suite
- Aristocraft Birch Cabinets
- Video Doorbell
- 64 Estimated HERS Index
- Kitchen Island
- Pendant Lights at Island
- Silestone Quartz Countertops
- Hardwood in Kitchen, Dining, GR, & Laundry
- Ceramic in Primary Bath
- Upgraded Shaw Carpet & Pad
- Stainless Steel Appliances
- Decorative Backsplash
- LED Recess Style Kitchen Lights
- Ceiling Fans in Primary and GR
- Upgraded Arbor Chrome Faucets

HOA: \$63 Monthly

Call (513) 477-2005 for more information
or visit us today at johnhenryhomes.com



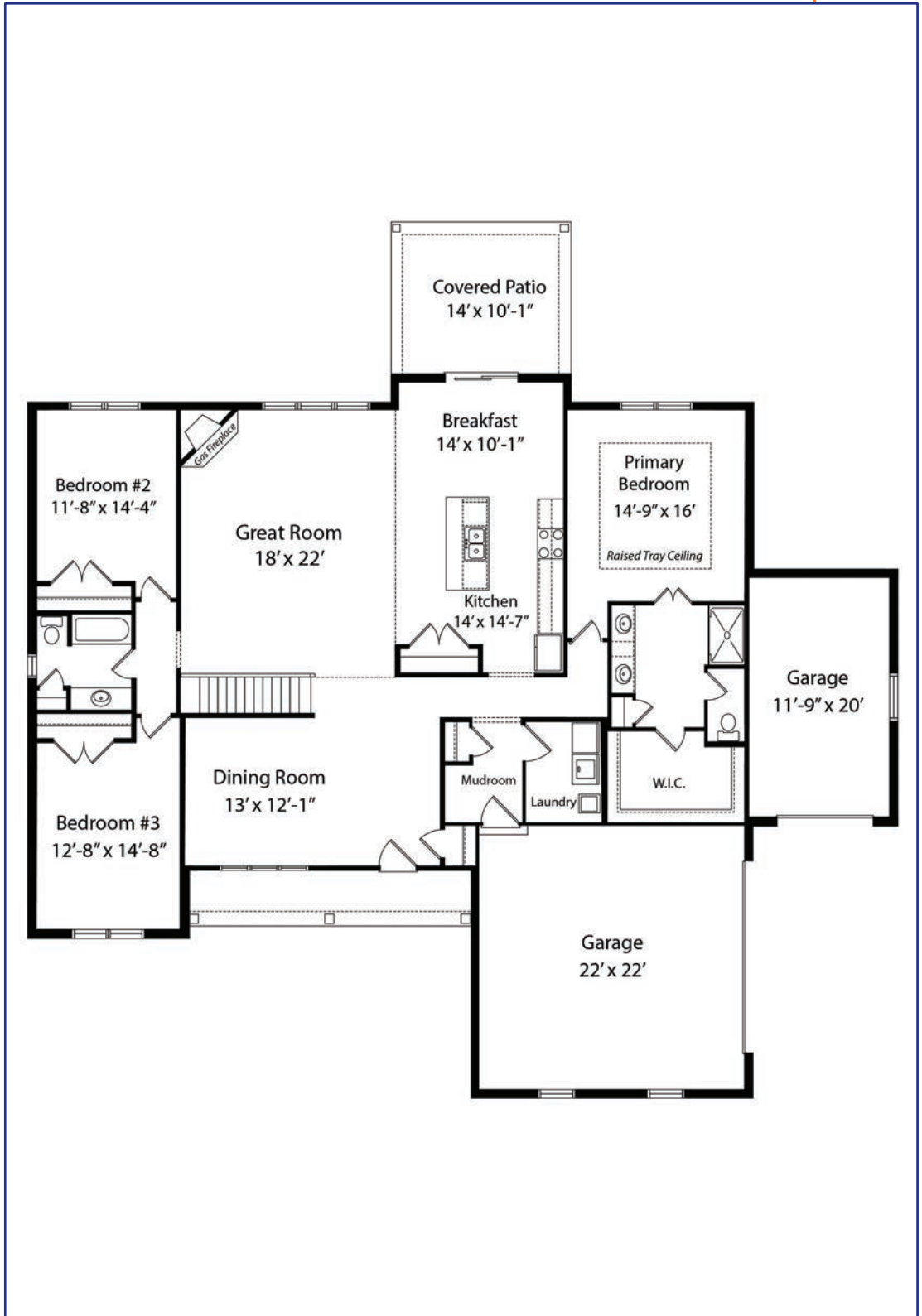
11025 Reed Hartman Hwy.
Cincinnati, OH 45242
513.745.9019
johnhenryhomes.com



Because we are constantly improving our product, we reserve the right to change product features, brand names, dimensions, architectural details & design. This brochure is for illustrative purposes only & is in no way part of a legal, binding contract. Floor plans vary by elevation. Front entry garage is standard. Brick wrap will affect room dimensions.
©2024 John Henry Homes Inc.

7190 Susan Springs Drive • \$674,900

The Gabrielle



11025 Reed Hartman Hwy.
Cincinnati, OH 45242
513.745.9019
johnhenryhomes.com



Because we are constantly improving our product, we reserve the right to change product features, brand names, dimensions, architectural details & design. This brochure is for illustrative purposes only & is in no way part of a legal, binding contract. Floor plans vary by elevation. Front entry garage is standard. Brick wrap will affect room dimensions.
©2024 John Henry Homes Inc.