



Turning Leaf 224 • The Saratoga II  
**624 Crabapple Ct • \$414,900**



**Design Features and Decorator Choices:**

- Approximately 1684 Sq. Ft.
- Level Homesite
- 2 Full Bathrooms
- 3 Bedrooms
- 9' First Floor Ceilings
- 2 Car Front Entry Garage
- Mudroom Cubbies
- Video Doorbell
- Dimensional Shingles
- 58 Estimated HERS Index
- Updated Aristokraft Cabinets
- GE Smooth Top Range
- GE Spacesaver Microwave
- LVP Floors Kitchen & Great Room
- Upgraded Shaw Carpet & Pad
- Stainless Steel Appliances
- LED Recess Style Kitchen Lights
- Ceiling Fans in Primary and GR
- Pendant Lights at Island
- Upgraded Moen Faucets

HOA: \$43 Monthly

**Call (513) 607-3325 for more information**  
or visit us today at [johnhenryhomes.com](http://johnhenryhomes.com)



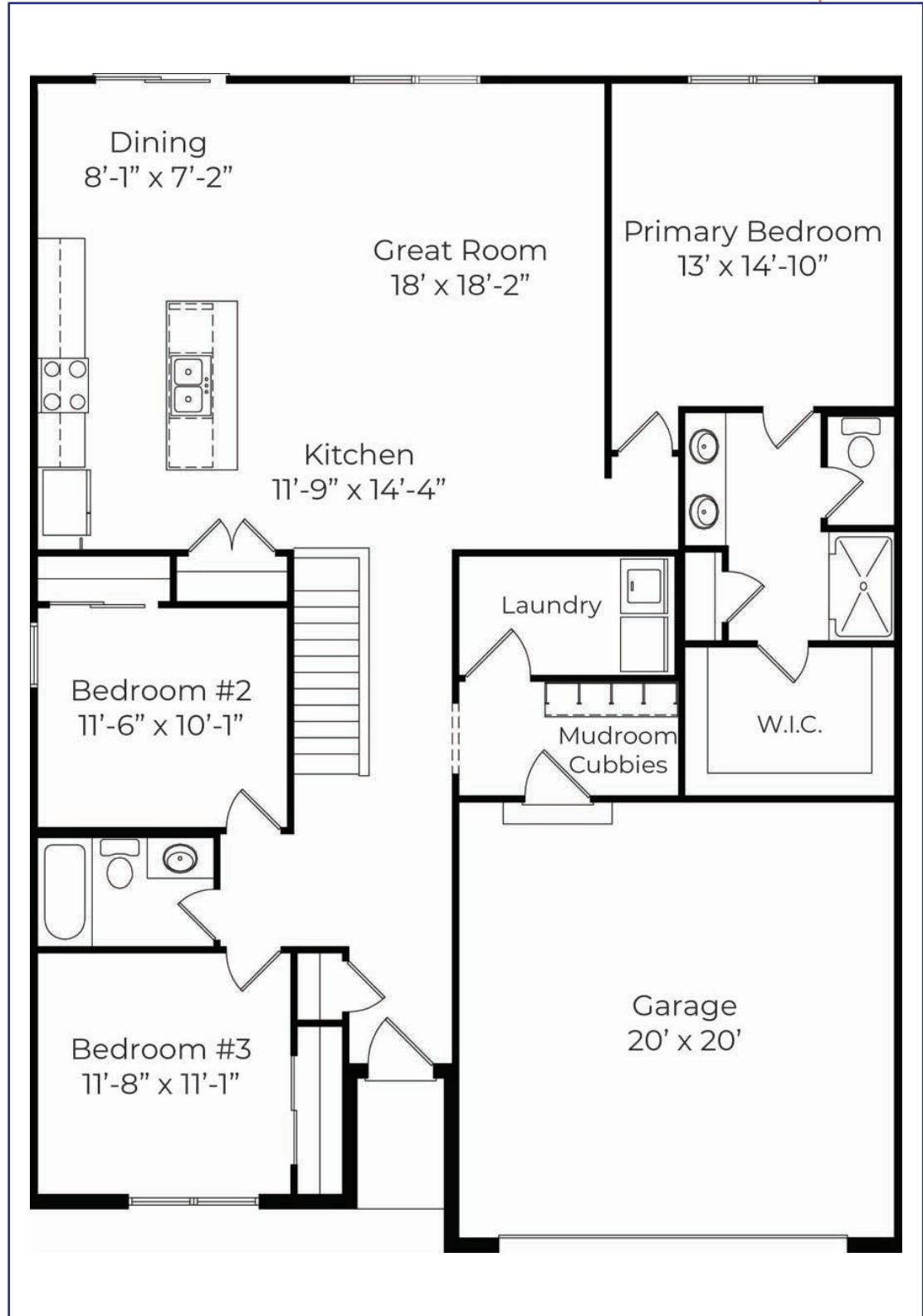
11025 Reed Hartman Hwy.  
Cincinnati, OH 45242  
513.745.9019  
[johnhenryhomes.com](http://johnhenryhomes.com)



Because we are constantly improving our product, we reserve the right to change product features, brand names, dimensions, architectural details & design. This brochure is for illustrative purposes only & is in no way part of a legal, binding contract. Floor plans vary by elevation. Front entry garage is standard. Brick wrap will affect room dimensions.  
©2023 John Henry Homes Inc.

624 Crabapple Ct • \$414,900

## The Saratoga II



**john henry**  
HOMES

11025 Reed Hartman Hwy.  
Cincinnati, OH 45242  
513.745.9019  
johnhenryhomes.com



Because we are constantly improving our product, we reserve the right to change product features, brand names, dimensions, architectural details & design. This brochure is for illustrative purposes only & is in no way part of a legal, binding contract. Floor plans vary by elevation. Front entry garage is standard. Brick wrap will affect room dimensions.  
©2023 John Henry Homes Inc.

Rev 6/2023