



Turning Leaf 207 • The Belmont
643 Crabapple Ct • \$389,900



Design Features and Decorator Choices:

- Approximately 1856 Sq. Ft.
- 9' First Floor
- Level Homesite
- Dimensional Shingles
- 2 ½ Bathrooms
- 3 Bedrooms
- GE Spacesaver Microwave
- 2 Car Front Entry Garage
- Ice Maker Line
- Garage Door Opener
- 64 Estimated HERS Index
- Upgraded Aristokraft Cabinets
- GE Smooth Top Range
- LVP Floor in Kitchen, Foyer, & Powder Room
- Upgraded Shaw Carpet & Pad
- Stainless Steel GE Appliances
- LED Recess Style Kitchen Lights
- Ceiling Fans in Primary and GR
- Pendant Lights at Island
- Upgraded Moen Faucets
- Crown Moulding Kitchen Cabinets

HOA: \$43 Monthly

Call (513) 607-3325 for more information
or visit us today at johnhenryhomes.com



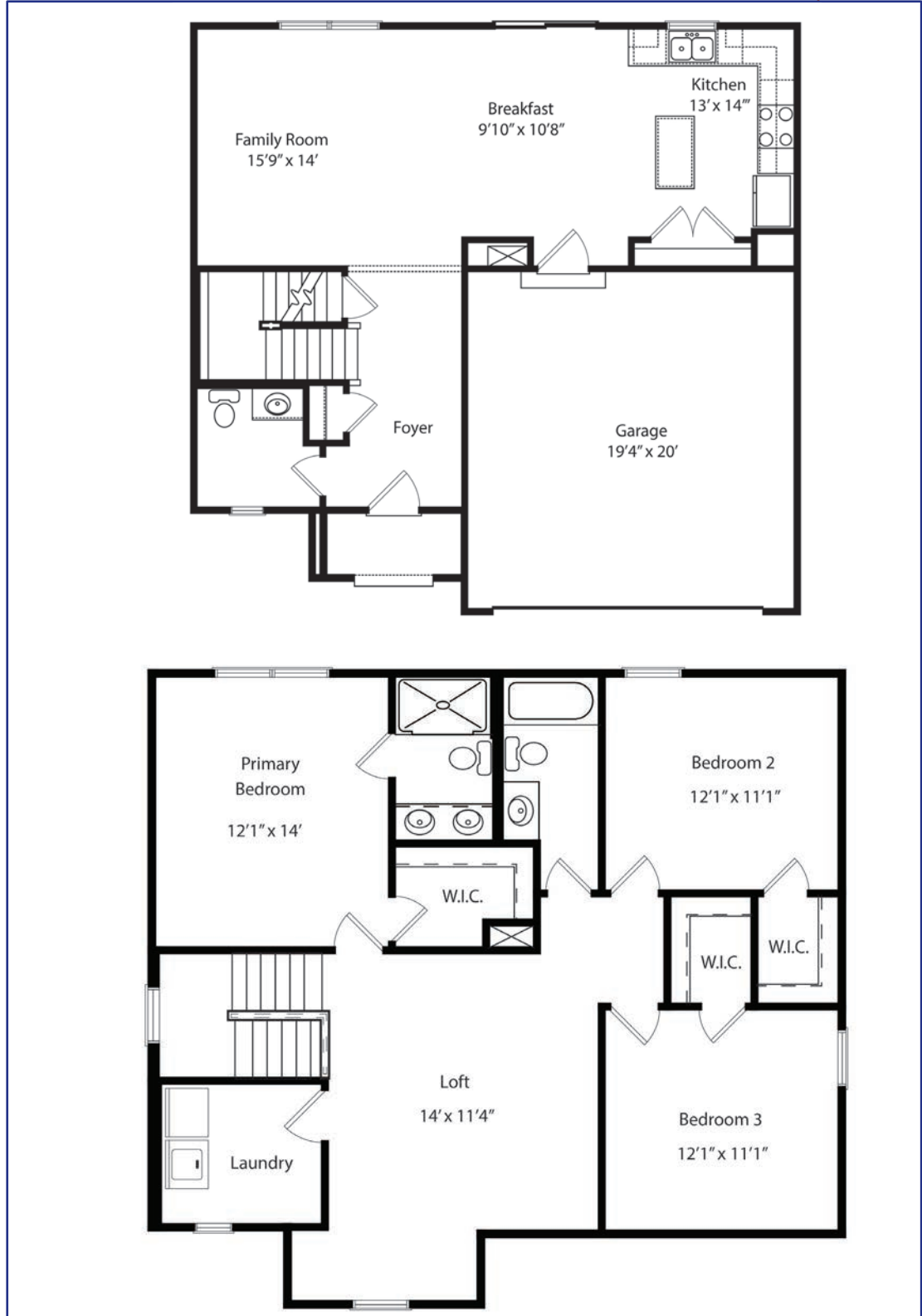
11025 Reed Hartman Hwy.
Cincinnati, OH 45242
513.745.9019
johnhenryhomes.com



Because we are constantly improving our product, we reserve the right to change product features, brand names, dimensions, architectural details & design. This brochure is for illustrative purposes only & is in no way part of a legal, binding contract. Floor plans vary by elevation. Front entry garage is standard. Brick wrap will affect room dimensions.
©2023 John Henry Homes Inc.

643 Crabapple Ct • \$389,280

The Belmont



11025 Reed Hartman Hwy.
Cincinnati, OH 45242
513.745.9019
johnhenryhomes.com



Because we are constantly improving our product, we reserve the right to change product features, brand names, dimensions, architectural details & design. This brochure is for illustrative purposes only & is in no way part of a legal, binding contract. Floor plans vary by elevation. Front entry garage is standard. Brick wrap will affect room dimensions.
©2023 John Henry Homes Inc.