



Caravel 25 • The Aria

6988 Gaspar Trail • \$824,900



Design Features and Decorator Choices:

- Approximately 3751 Sq. Ft.
- Almost Half Acre Homesite
- 4 Bathrooms
- 4 Bedrooms
- 9' Lower Level
- Stone Fireplace
- Spa Like Walk-in Shower
- 2 Car Side Entry Garage with Carriage
- Mudroom Cubbies
- 12'x 17' Covered Deck
- Garage Door Opener
- 60 Estimated HERS Index
- Aristokraft Painted Cabinets
- Quartz Countertops
- GE Gas Cooktop
- Stainless Steel Appliances
- Gourmet Kitchen
- Hardwood Floors in Kitchen, Dining, Great Room, & Hall
- Ceramic Baths and Laundry
- Upgraded Shaw Carpet & Pad
- Decorative Backsplash
- Upgraded Moen Faucets
- Beamed Ceiling in Great Room
- Tray Ceiling in Primary Bedroom



11025 Reed Hartman Hwy.
Cincinnati, OH 45242
513.745.9019
johnhenryhomes.com



Because we are constantly improving our product, we reserve the right to change product features, brand names, dimensions, architectural details & design. This brochure is for illustrative purposes only & is in no way part of a legal, binding contract. Floor plans vary by elevation. Front entry garage is standard. Brick wrap will affect room dimensions.

©2024 John Henry Homes Inc.

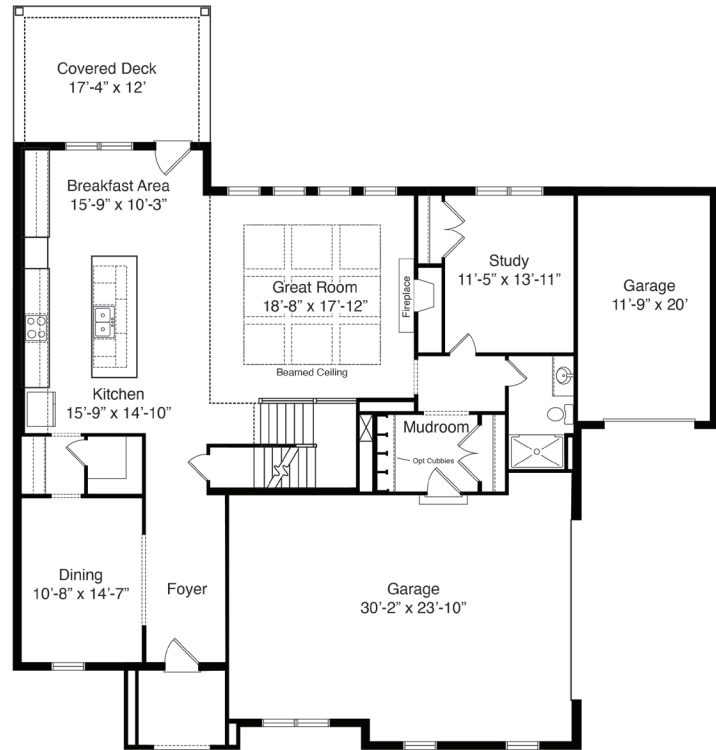
HOA: \$80 Monthly

Call (513) 477-2005 for more information
or visit us today at johnhenryhomes.com

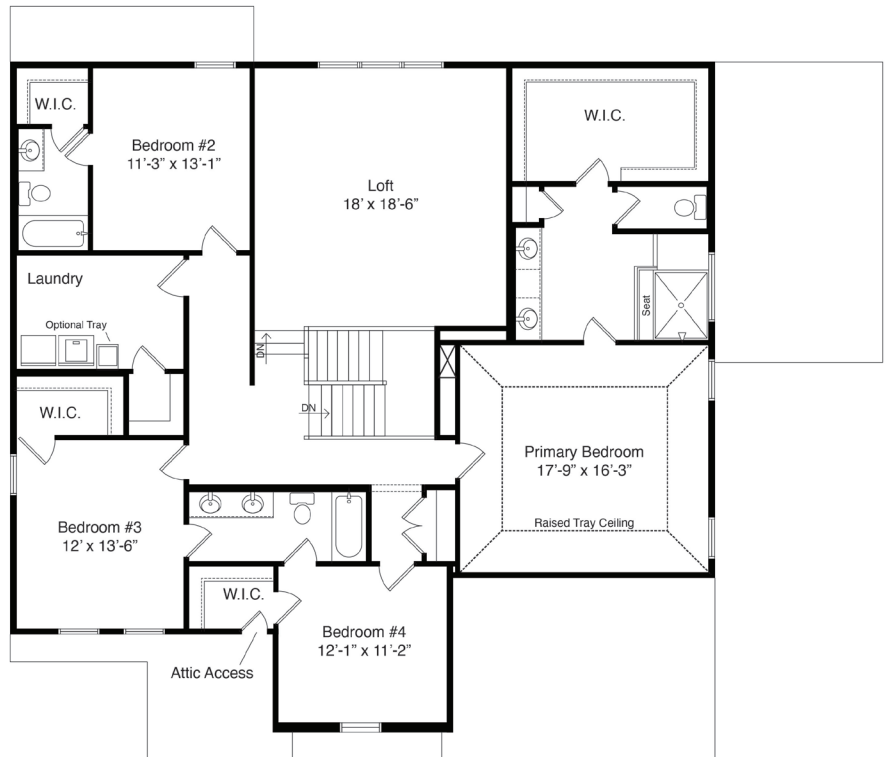
6988 Gaspar Trail • \$824,900

The Aria

First Floor



Second Floor



11025 Reed Hartman Hwy.
Cincinnati, OH 45242
513.745.9019
johnhenryhomes.com



Because we are constantly improving our product, we reserve the right to change product features, brand names, dimensions, architectural details & design. This brochure is for illustrative purposes only & is in no way part of a legal, binding contract. Floor plans vary by elevation. Front entry garage is standard.

Brick wrap will affect room dimensions.

©2024 John Henry Homes Inc.