



Caravel 035 • The Willow

6963 Gaspar Trail • \$724,900



Design Features and Decorator Choices:

- Approximately 3396 Sq. Ft.
- Gorgeous Site
- 4 ½ Baths
- 5 Bedrooms
- 9' Lower Level
- Tray Ceiling in Primary Suite
- 2 Car Side Entry Garage w/ Carriage
- Beamed Ceiling in Great Room
- Garage Door Opener
- First Floor Guest Suite
- Hardwood Floor First Floor
- 56 Estimated HERS Index
- Aristokraft Painted Cabinets
- Quartz Countertops
- Gourmet Kitchen
- Stone Fireplace
- Upgraded Shaw Carpet & Pad
- Stainless Steel Appliances
- Decorative Backsplash
- LED Recessed Style Kitchen Lights
- Pendant Lights at Island
- Upgraded Moen Arbor Faucets
- Mudroom Cubbies
- Smart Home Package

HOA: \$80 Monthly

Call (513) 477-2005 for more information

or visit us today at johnhenryhomes.com



11025 Reed Hartman Hwy.
Cincinnati, OH 45242
513.745.9019
johnhenryhomes.com



Because we are constantly improving our product, we reserve the right to change product features, brand names, dimensions, architectural details & design. This brochure is for illustrative purposes only & is in no way part of a legal, binding contract. Floor plans vary by elevation. Front entry garage is standard. Brick wrap will affect room dimensions.

©2024 John Henry Homes Inc.

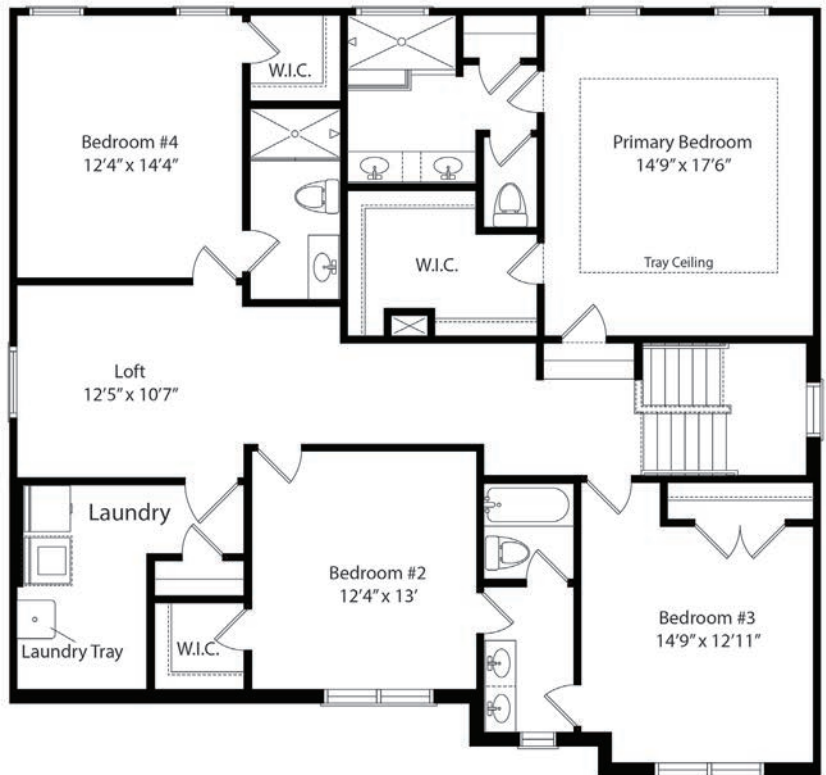
6963 Gaspar Trail • \$724,900

The Willow

First Floor



Second Floor



john henry
HOMES

11025 Reed Hartman Hwy.
Cincinnati, OH 45242
513.745.9019
johnhenryhomes.com



Because we are constantly improving our product, we reserve the right to change product features, brand names, dimensions, architectural details & design. This brochure is for illustrative purposes only & is in no way part of a legal, binding contract. Floor plans vary by elevation. Front entry garage is standard.

Brick wrap will affect room dimensions.
©2024 John Henry Homes Inc.

REV 3/24