



City of Madeira • The Logan

7255 Thomas Drive • \$672,900



Design Features and Decorator Choices

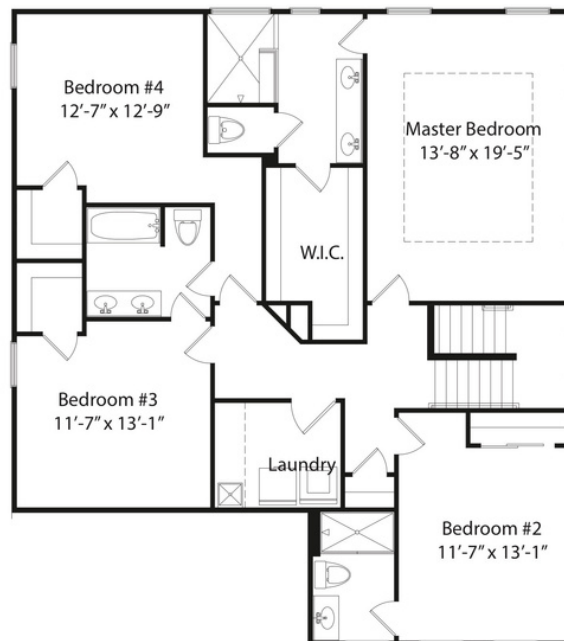
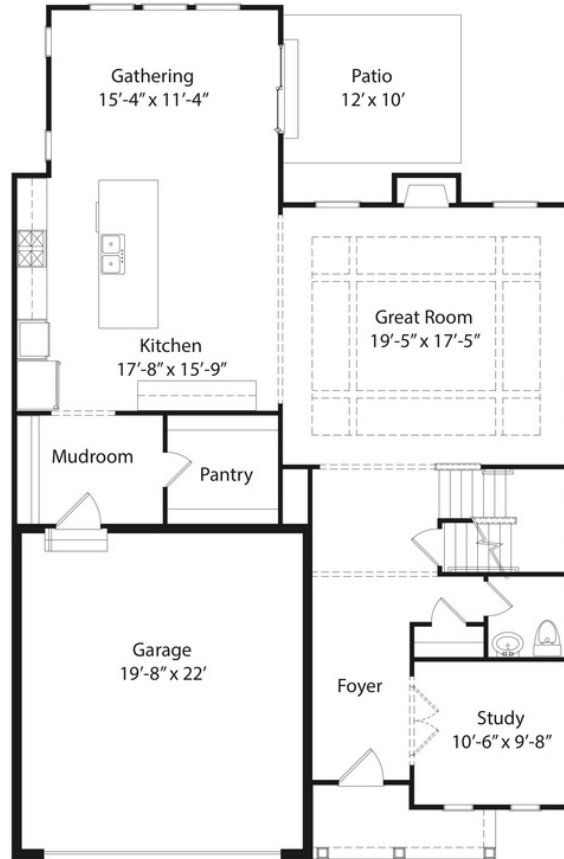
- 4 Bedrooms on Second Floor
- 3 Full Baths, 1 Half Bath
- Approximately 2,784 Sq.Ft.
- 9' 1st Floor Ceilings
- 9' Basement Walls
- Wide Plank Hardwood First Floor
- Smooth Ceilings
- Gas Fireplace with Shiplap Surround
- Quartz Countertops
- GE Stainless Steel Appliances
- GE Profile Stainless Steel Hood
- Gas Range
- Upgraded Aristokraft Cabinets
- Quiet Close Kitchen Cabinets
- Designer Tile Backsplash
- Built-in Cubbies in Mud Room
- Tile Floors Baths and Laundry
- Oak Treads Stairs
- Rain Shower in Owner's Bath
- Upgraded Moen Faucets
- Pendant Lights at Island
- Energy Efficient LED Recessed Style Lighting



Because we are constantly improving our product, we reserve the right to change product features, brand names, dimensions, architectural details & design. This brochure is for illustrative purposes only & is in no way part of a legal, binding contract. Floor plans vary by elevation. Front entry garage is standard. Brick wrap will affect room dimensions. © 2021 John Henry Homes Inc.

Call Bob Hines of Coldwell Banker Realty
513.260.0428 ◦ Bob@BuildCollective.com

City of Madeira • The Logan
7255 Thomas Drive • \$672,900



11025 Reed Hartman Hwy.
Cincinnati, OH 45242
513.745.9019
johnhenryhomes.com



©2021 Coldwell Banker. All Rights Reserved. Coldwell Banker and the Coldwell Banker logos are trademarks of Coldwell Banker Real Estate LLC. The Coldwell Banker® System is comprised of company owned offices which are owned by a subsidiary of Realty Brokerage Group LLC and franchised offices which are independently owned and operated. The Coldwell Banker System fully supports the principles of the Fair Housing Act and the Equal Opportunity Act.