



Keeneland Estates 7955 • The William II  
**549 Calumet Farms Drive • \$364,900**



### Design Features and Decorator Choices:

- Approximately 2065 Sq. Ft.
- 10' Great Room Ceilings
  - 9' 1st Floor Ceilings
  - 9' Lower Level
- Luxury Walk-in Shower
- Gas Fireplace with Stone
- Raised Tray in Owner's
  - Smooth Ceilings
- Wainscoating in Dining
  - Recessed Lights
- Ceiling Fan in Great Room
- Ceiling Fan in Owner's Suite
  - 61 Estimated HERS
- Upgraded Aristokraft Cabinets
  - Quartz Countertops
  - Gas Range
- Stainless Steel Appliances
- Hardwood Floors in Kitchen
- Hardwood Floors in Great Room
- Hardwood Floors in Dining Room
- Moen Voss ORB Vanity Faucets
  - Designer Back splash
- Tile Floors in Master Bath
- Tile Floors in Hall Bath
- Tile Floors in Laundry
- Pendant Lights Island



11025 Reed Hartman Hwy.  
Cincinnati, OH 45242  
513.745.9019  
[johnhenryhomes.com](http://johnhenryhomes.com)

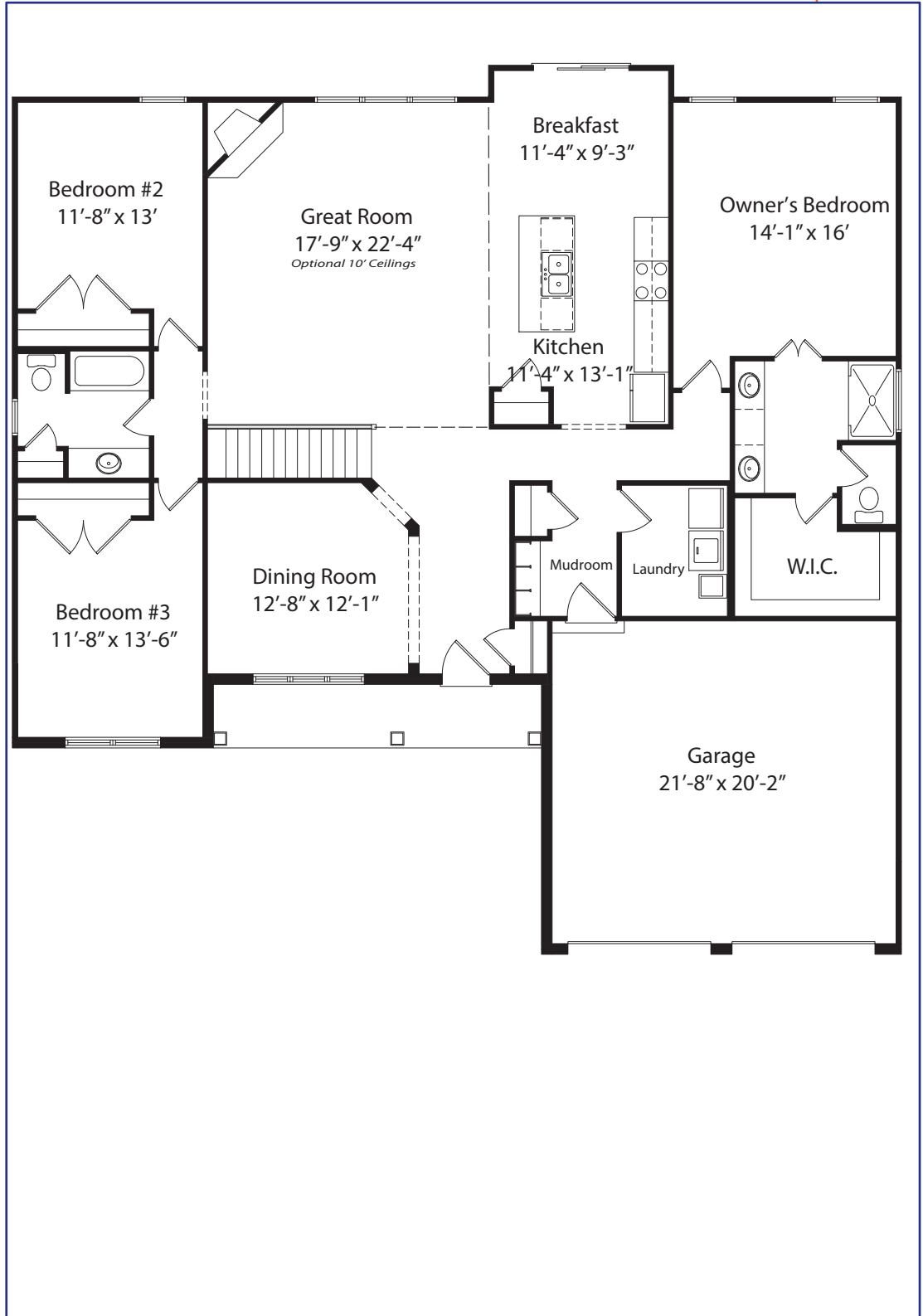


Because we are constantly improving our product, we reserve the right to change product features, brand names, dimensions, architectural details & design. This brochure is for illustrative purposes only & is in no way part of a legal, binding contract. Floor plans vary by elevation. Front entry garage is standard. Brick wrap will affect room dimensions.  
©2019 John Henry Homes Inc.

**Call (513) 448-9959 for more information**  
or visit us today at [johnhenryhomes.com](http://johnhenryhomes.com)

# Keeneland Estates 7955 • \$364,900

## The William II



11025 Reed Hartman Hwy.  
Cincinnati, OH 45242  
513.745.9019  
johnhenryhomes.com



Because we are constantly improving our product, we reserve the right to change product features, brand names, dimensions, architectural details & design. This brochure is for illustrative purposes only & is in no way part of a legal, binding contract. Floor plans vary by elevation. Front entry garage is standard. Brick wrap will affect room dimensions. ©2019 John Henry Homes Inc.