

Keeneland Estates 7929 • The Peyton  
**413 Calumet Farms Court • \$364,900**



***Features:***

- Approximately 2925 Sq. Ft.
- 2 Story Great Room
- 9' 1st Floor Ceilings
- Beamed Ceiling
- 3 Car Garage
- Gas Fireplace
- Vaulted Ceiling in Master
- Walk-in Shower
- Covered Patio
- Mudroom with Cubbies

***Price Also Includes***

- Upgraded Cabinets
- Granite Countertops
- Gourmet Kitchen
- Vented Microwave
- Stainless Steel Appliances
- Hardwood Floors in Kitchen
- Moen Voss Vanity Faucets
- Upgraded Carpet Pad
- Designer Backsplash
- Tile Floors in Master Bath
- Pendant Lights Island



11025 Reed Hartman Hwy.  
Cincinnati, OH 45242  
513.745.9019  
[johnhenryhomes.com](http://johnhenryhomes.com)

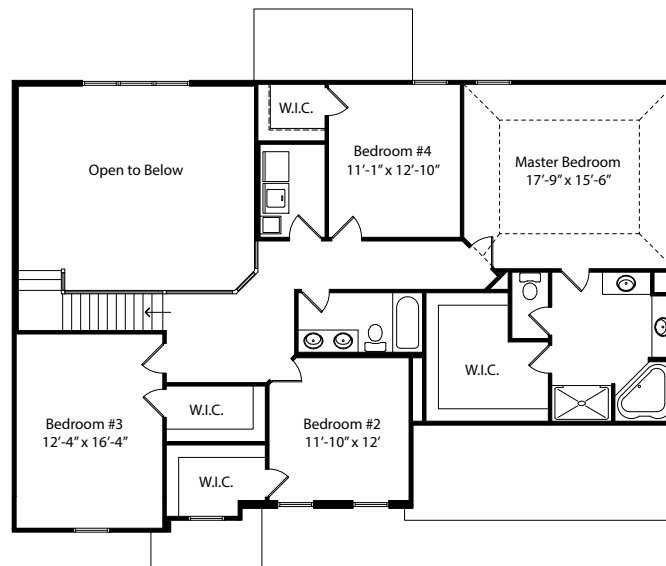
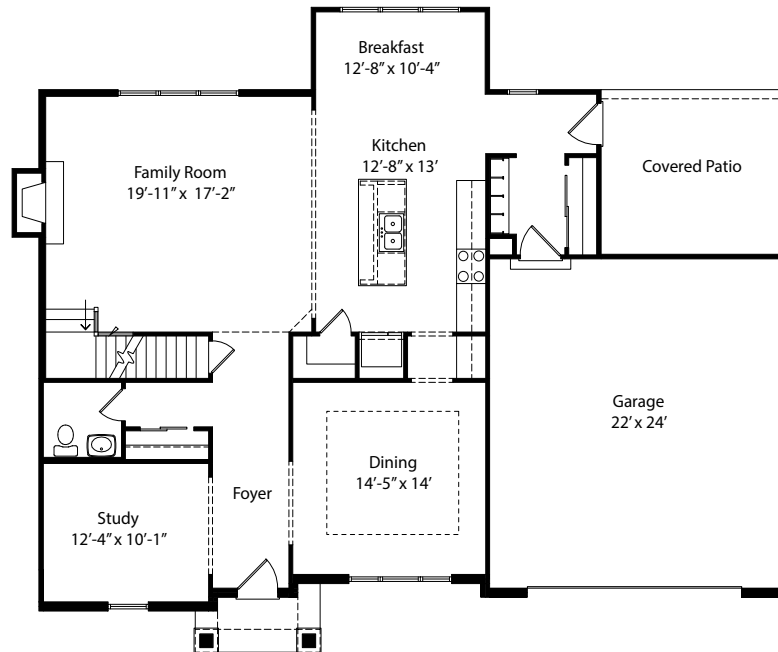


Because we are constantly improving our product, we reserve the right to change product features, brand names, dimensions, architectural details & design. This brochure is for illustrative purposes only & is in no way part of a legal, binding contract. Floor plans vary by elevation. Front entry garage is standard. Brick wrap will affect room dimensions. ©2010 John Henry Homes Inc.

**Call (513) 310-9779 for more information**  
or visit us today at [johnhenryhomes.com](http://johnhenryhomes.com)

# Keeneland Estates 7929 • \$364,900

## The Peyton



11025 Reed Hartman Hwy.  
Cincinnati, OH 45242  
513.745.9019  
[johnhenryhomes.com](http://johnhenryhomes.com)



Because we are constantly improving our product, we reserve the right to change product features, brand names, dimensions, architectural details & design. This brochure is for illustrative purposes only & is in no way part of a legal, binding contract. Floor plans vary by elevation. Front entry garage is standard. Brick wrap will affect room dimensions. ©2017 John Henry Homes Inc.