

Hunters Ridge 30 • The Emery

7355 Hunters Ridge Drive • \$434,900



Design Features and Decorator Choices:

- Approximately 1804 Sq. Ft.
- 9' 1st Floor Ceilings
- Dimensional Shingles
- LVP Flooring
- Pendant Lights at Island
- Ceiling Fan in Great Room
- Ceiling Fan in Owner's Suite
- Energy Efficient LED Lights
- Smart Home Package with Video Doorbell
- 59 Estimated HERS Score
- Aristokraft Benton White Cabinets
- Crown Molding on Cabinets
- Carra Marmi Quartz Countertops
- GE Smooth Top Range
- Spacesaver Microwave
- Stainless Steel Appliances
- Moen Sleek Kitchen Faucet
- Moen Glyde Chrome Faucets
- Dal-Tile Remedy Backsplash
- Garage Door Opener
- Upgraded Shaw Carpeting and Pad


john henry
HOMES

11025 Reed Hartman Hwy.
Cincinnati, OH 45242
513.745.9019
johnhenryhomes.com

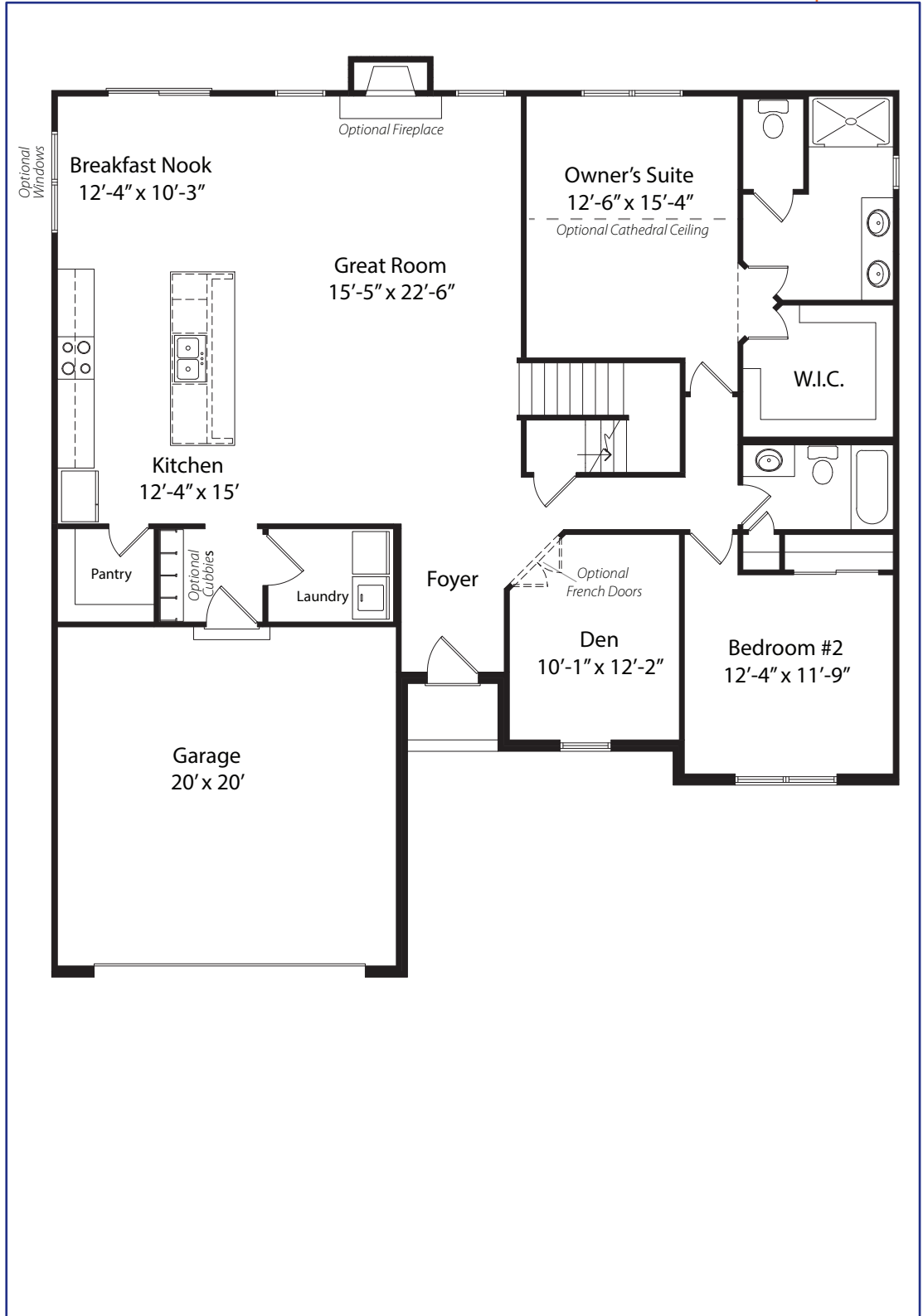


Because we are constantly improving our product, we reserve the right to change product features, brand names, dimensions, architectural details & design. This brochure is for illustrative purposes only & is in no way part of a legal, binding contract. Floor plans vary by elevation. Front entry garage is standard. Brick wrap will affect room dimensions.
©2023 John Henry Homes Inc.

Call (513) 240-6722 for more information
or visit us today at johnhenryhomes.com

Hunters Ridge 30 • \$434,900

The Emery



11025 Reed Hartman Hwy.
Cincinnati, OH 45242
513.745.9019
johnhenryhomes.com



Because we are constantly improving our product, we reserve the right to change product features, brand names, dimensions, architectural details & design. This brochure is for illustrative purposes only & is in no way part of a legal, binding contract. Floor plans vary by elevation. Front entry garage is standard. Brick wrap will affect room dimensions. ©2021 John Henry Homes Inc.