



Carriage Crossing 7 • The Austin

**5875 Tilbury Court • \$469,900**



***Features:***

- Approximately 3551 Sq. Ft.
- 2 Car Side Entry Garage
- 3rd Car Carriage Garage
- 2 Story Stone Fireplace
- 1st Floor In-Law Suite
- 9' 1st Floor
- Oak Treads
- Mudroom Cubbies
- Smooth Ceilings
- 95% Efficient Furnace
- 63 HERS

***Price Also Includes***

- Aristokraft Winstead Cabinets
- Gourmet Kitchen
- Quartz Countertops
- Kohler Farmhouse Sink
- Chimney Style Hood
- Hardwood Kitchen
- Stainless Steel Appliances
- Decorative Backsplash
- Pendant Lights at Island
- Ceramic Baths and Laundry



11025 Reed Hartman Hwy.  
Cincinnati, OH 45242  
513.745.9019  
johnhenryhomes.com

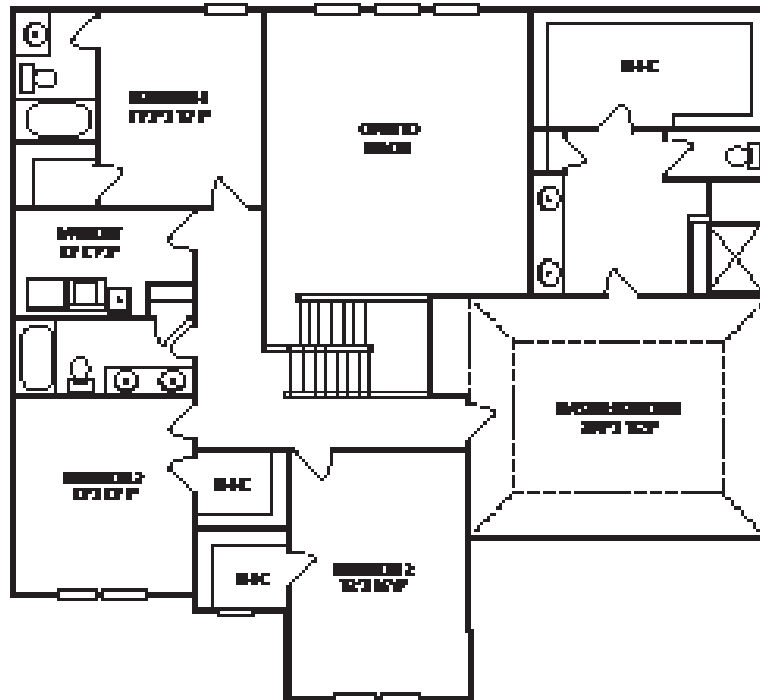
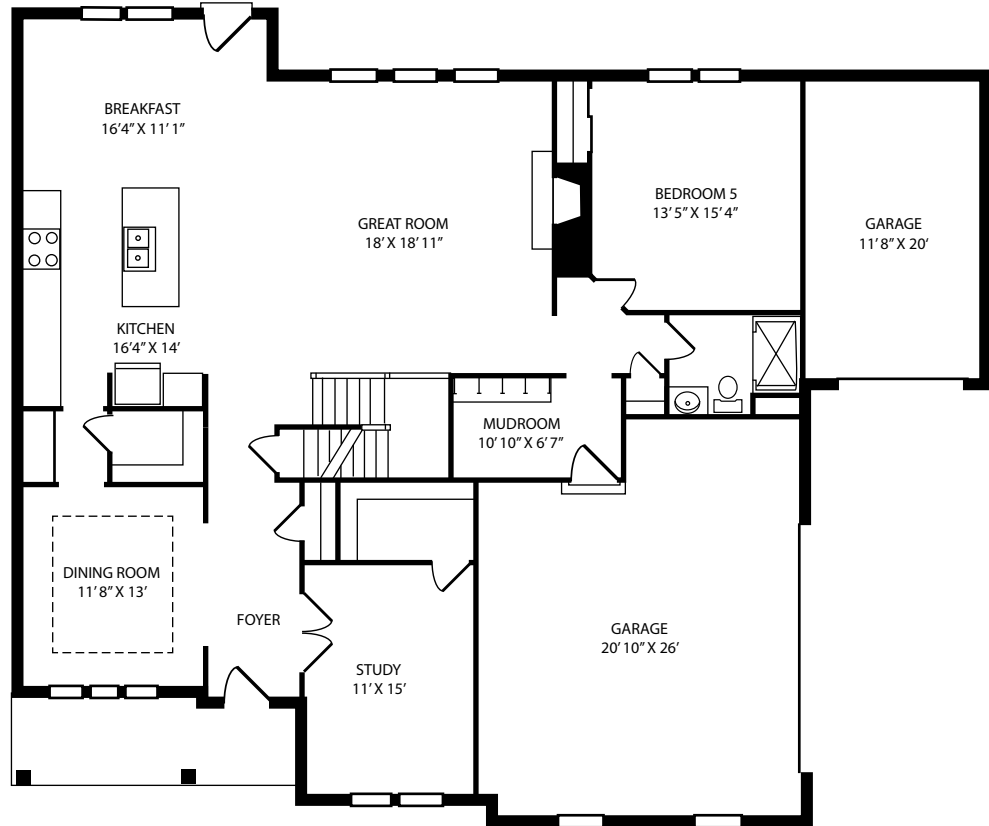


Because we are constantly improving our product, we reserve the right to change product features, brand names, dimensions, architectural details & design. This brochure is for illustrative purposes only & is in no way part of a legal, binding contract. Floor plans vary by elevation. Front entry garage is standard. Brick wrap will affect room dimensions. ©2017 John Henry Homes Inc.

**Call (513)607-3325 for more information**  
or visit us today at [johnhenryhomes.com](http://johnhenryhomes.com)

# 5875 Tilbury Court • \$469,900

## The Austin



11025 Reed Hartman Hwy.  
Cincinnati, OH 45242  
513.745.9019  
johnhenryhomes.com



Because we are constantly improving our product, we reserve the right to change product features, brand names, dimensions, architectural details & design. This brochure is for illustrative purposes only & is in no way part of a legal, binding contract. Floor plans vary by elevation. Front entry garage is standard. Brick wrap will affect room dimensions. ©2017 John Henry Homes Inc.