

Carriage Crossing 5 • The Peyton  
**5895 Tilbury Trail • \$389,900**



***Features:***

- Approximately 2925 Sq. Ft.
- Covered Patio
- 2 Story Great Room
- 3 Full Baths
- 9' 1st Floor
- 3 Car Side Entry Garage
- Gas Fireplace
- Coffered Ceiling in Master
- 95% Efficient Furnace
- 10 Year Structural Warranty

***Price Also Includes***

- Gourmet Kitchen
- Quartz Countertops
- Hardwood Kitchen
- Hardwood Great Room
- Stainless Steel Appliances
- Custom Backsplash
- Upgraded Moen Faucets
- Recess Kitchen Lights
- Pendant Lights at Island
- Overhead Bedroom Lights
- Ice Maker Line
- Upgraded Ceramic Baths
- Mudroom Cubbies

**Call (513) 607-3325 for more information**  
or visit us today at [johnhenryhomes.com](http://johnhenryhomes.com)



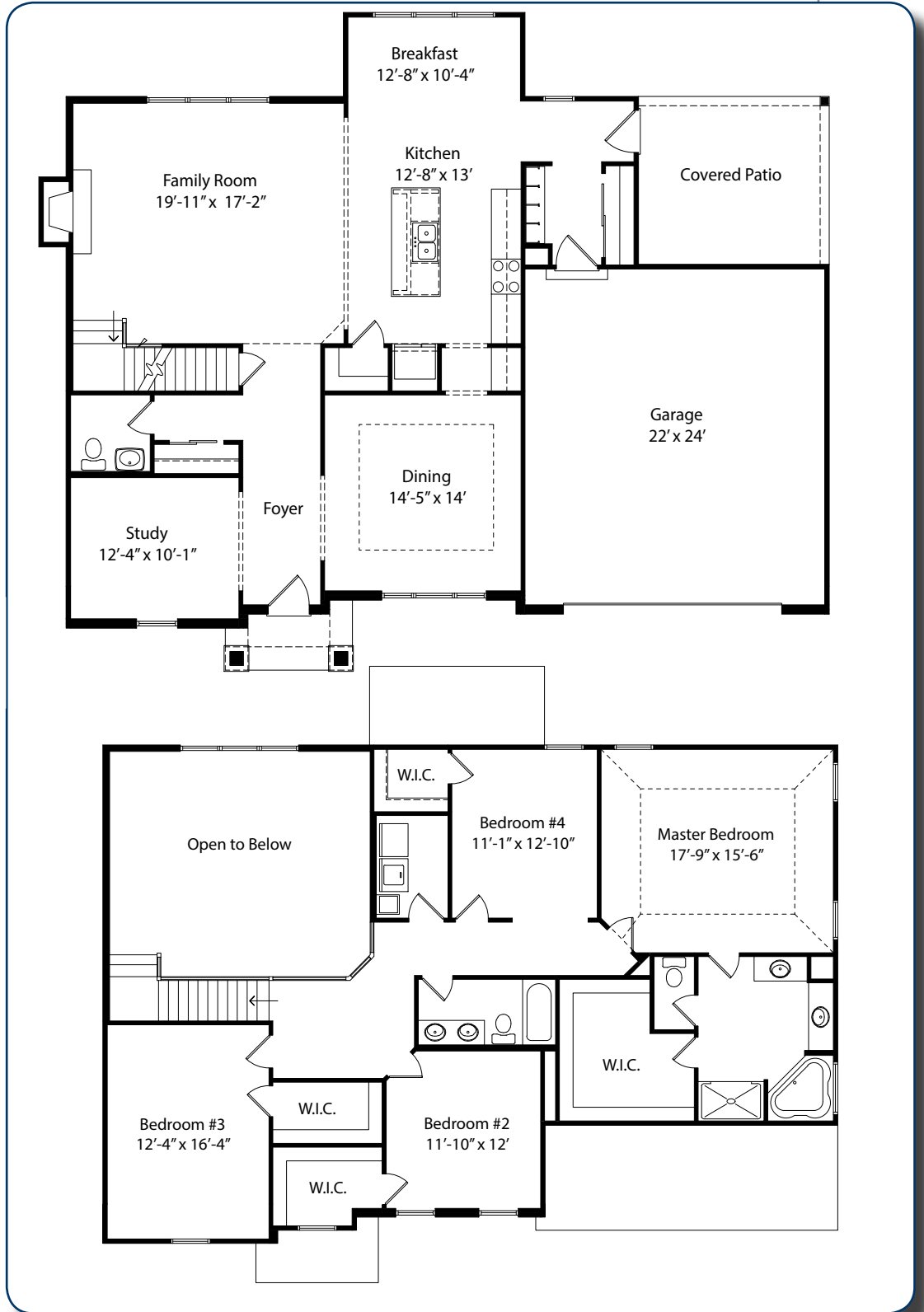
11025 Reed Hartman Hwy.  
Cincinnati, OH 45242  
513.745.9019  
[johnhenryhomes.com](http://johnhenryhomes.com)



Because we are constantly improving our product, we reserve the right to change product features, brand names, dimensions, architectural details & design. This brochure is for illustrative purposes only & is in no way part of a legal, binding contract. Floor plans vary by elevation. Front entry garage is standard. Brick wrap will affect room dimensions. ©2016 John Henry Homes Inc.

# 5895 Tilbury Trail • \$389,900

## The Peyton



11025 Reed Hartman Hwy.  
Cincinnati, OH 45242  
513.745.9019  
johnhenryhomes.com



Because we are constantly improving our product, we reserve the right to change product features, brand names, dimensions, architectural details & design. This brochure is for illustrative purposes only & is in no way part of a legal, binding contract. Floor plans vary by elevation. Front entry garage is standard. Brick wrap will affect room dimensions. ©2016 John Henry Homes Inc.