



Carriage Crossing 3 • The Gabrielle
5915 Tilbury Court • \$424,900



Features:

- Approximately 2367 Sq. Ft.
- 3 Car Garage
- 10' Great Room Ceilings
- 9' Lower Level Ceilings
- Luxury Bath
- Stone Fireplace
- Raised Tray in Owner's Suite
- Tray Ceiling in Dining Room
- Mudroom Cubbies
- Smooth Ceilings
- 95% Efficient Furnace
- 61 HERS

Price Also Includes

- Aristokraft Winstead Cabinets
- Gourmet Kitchen
- Quartz Countertops
- Hardwood Floors Kitchen
- Hardwood Floors in Dining Room
- Hardwood in Great Room
- Chimney Style Hood
- Stainless Steel Appliances
- Decorative Backsplash
- Pendant Lights at Island
- Ceramic Baths and Laundry



11025 Reed Hartman Hwy.
Cincinnati, OH 45242
513.745.9019
johnhenryhomes.com

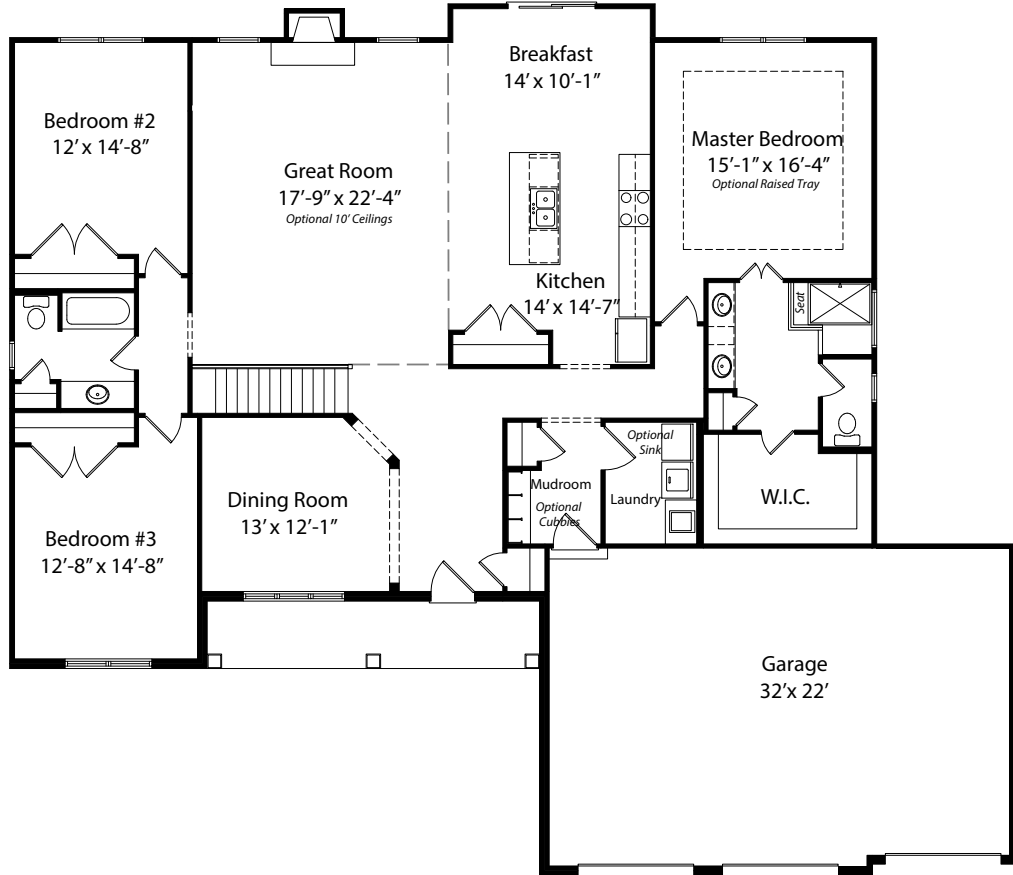


Because we are constantly improving our product, we reserve the right to change product features, brand names, dimensions, architectural details & design. This brochure is for illustrative purposes only & is in no way part of a legal, binding contract. Floor plans vary by elevation. Front entry garage is standard. Brick wrap will affect room dimensions. ©2017 John Henry Homes Inc.

Call (513)607-3325 for more information
or visit us today at johnhenryhomes.com

5915 Tilbury Court • \$424,900

The Gabrielle



11025 Reed Hartman Hwy.
Cincinnati, OH 45242
513.745.9019
johnhenryhomes.com



Because we are constantly improving our product, we reserve the right to change product features, brand names, dimensions, architectural details & design. This brochure is for illustrative purposes only & is in no way part of a legal, binding contract. Floor plans vary by elevation. Front entry garage is standard. Brick wrap will affect room dimensions. ©2017 John Henry Homes Inc.