

Indian Hill Schools - Symmes Township • The Sebastian

**9905 Alydar Court. • \$764,900**



***Features:***

- Approximately 5350 Sq. Ft.
- 9' 1st Floor Ceilings
- 9' Basement Walls
- 3 Car Side Entry Garage
- Covered Patio with Bead Board
- First Floor Guest Suite
- Finished Lower Level
- Gas Fireplace with Stone Surround
- Built-in Cubbies in Mud Room
- American Scrape Oak First Floor
- Oak Treads - Stairs
- Walk-in Shower with Rain Shower
- Big Laundry With Sink & Cabinet
- Stained Fiberglass Craftsman Door

***Price Also Includes***

- Gourmet Kitchen
- Aristokraft Wentworth Painted Cabinets
- Quiet Close Cabinets - Kitchen
- Quartz Counter Tops - Kitchen
- Quartz Vanity Tops - Owner's Suite
- GE Profile Stainless Steel Appliances
- Gas Range
- Smooth Ceilings
- Designer Tile Backsplash
- Tile Floors Baths and Laundry
- Wide Spread Faucets in Owner's Bath
- Moen Voss Faucets
- Pendant Lights at Island
- Recessed Lighting

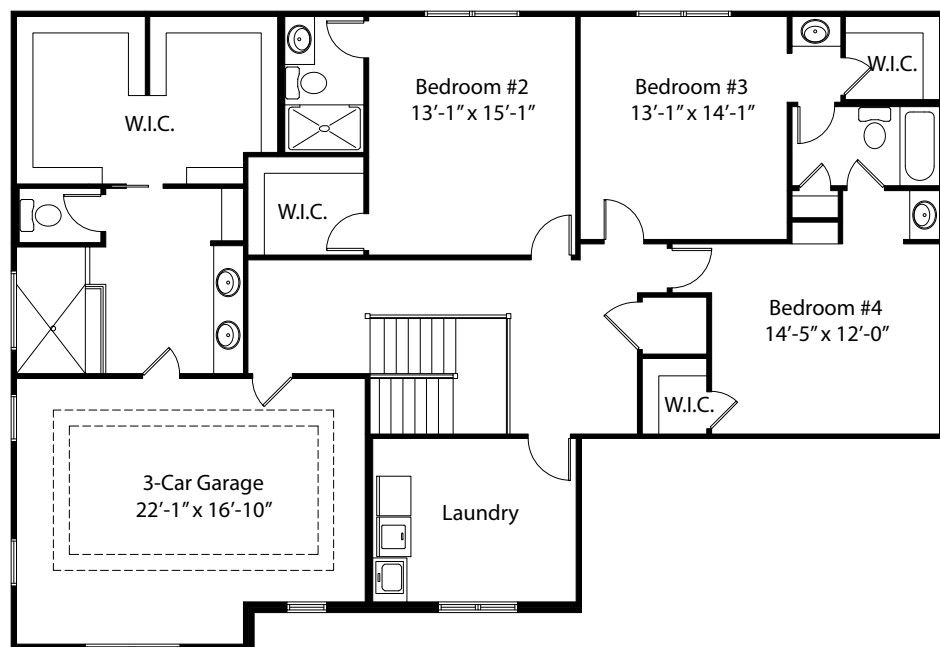
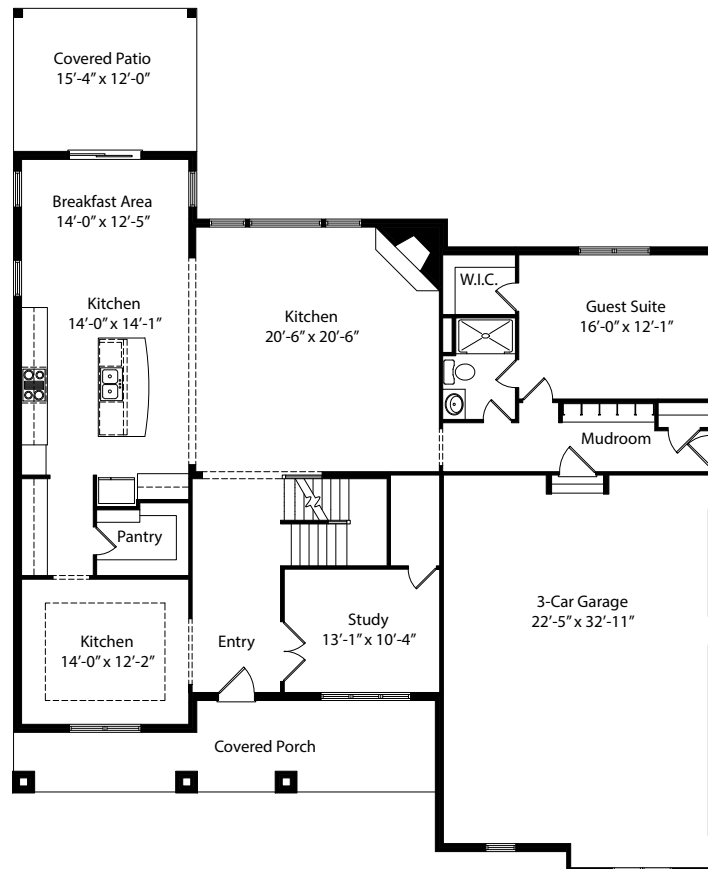


Because we are constantly improving our product, we reserve the right to change product features, brand names, dimensions, architectural details & design. This brochure is for illustrative purposes only & is in no way part of a legal, binding contract. Floor plans vary by elevation. Front entry garage is standard. Brick wrap will affect room dimensions. ©2018 John Henry Homes Inc.

**Call Bob Hines, Coldwell Banker West Shell**  
**(513) 260-0428 • [Bob@buildcincinnati.com](mailto:Bob@buildcincinnati.com)**

Indian Hill Schools - Symmes Township • \$764,900

## 9905 Alydar Court



Because we are constantly improving our product, we reserve the right to change product features, brand names, dimensions, architectural details & design. This brochure is for illustrative purposes only & is in no way part of a legal, binding contract. Floor plans vary by elevation. Front entry garage is standard. Brick wrap will affect room dimensions. ©2018 John Henry Homes Inc.

Rev 9/2018