



Indian Hill Schools - Symmes Township • The Sebastian

**9905 Alydar Court. • \$764,900**



WEST SHELL



**Features:**

- Approximately 5350 Sq. Ft.
- 9' 1st Floor Ceilings
- 9' Basement Walls
- 3 Car Side Entry Garage
- Covered Patio with Bead Board
- First Floor Guest Suite
- Finished Lower Level
- Gas Fireplace with Stone Surround
- Built-in Cubbies in Mud Room
- American Scrape Oak First Floor
- Oak Treads - Stairs
- Walk-in Shower with Rain Shower
- Big Laundry With Sink & Cabinet
- Stained Fiberglass Craftsman Door

**Price Also Includes**

- Gourmet Kitchen
- Aristokraft Wentworth Painted Cabinets
- Quiet Close Cabinets - Kitchen
- Quartz Counter Tops - Kitchen
- Quartz Vanity Tops - Owner's Suite
- GE Profile Stainless Steel Appliances
- Gas Range
- Smooth Ceilings
- Designer Tile Backsplash
- Tile Floors Baths and Laundry
- Wide Spread Faucets in Owner's Bath
- Moen Voss Faucets
- Pendant Lights at Island
- Recessed Lighting

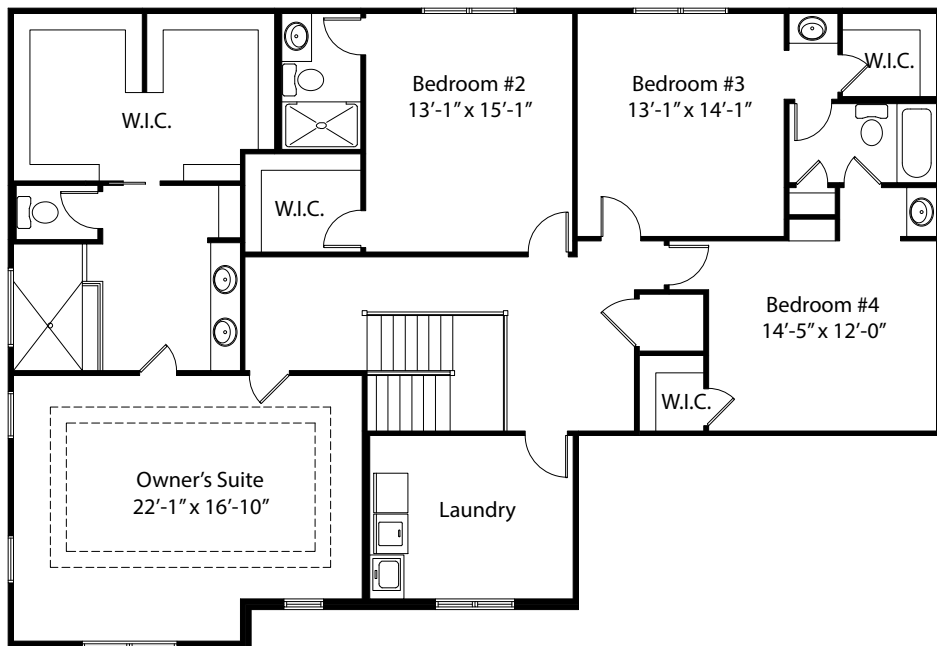
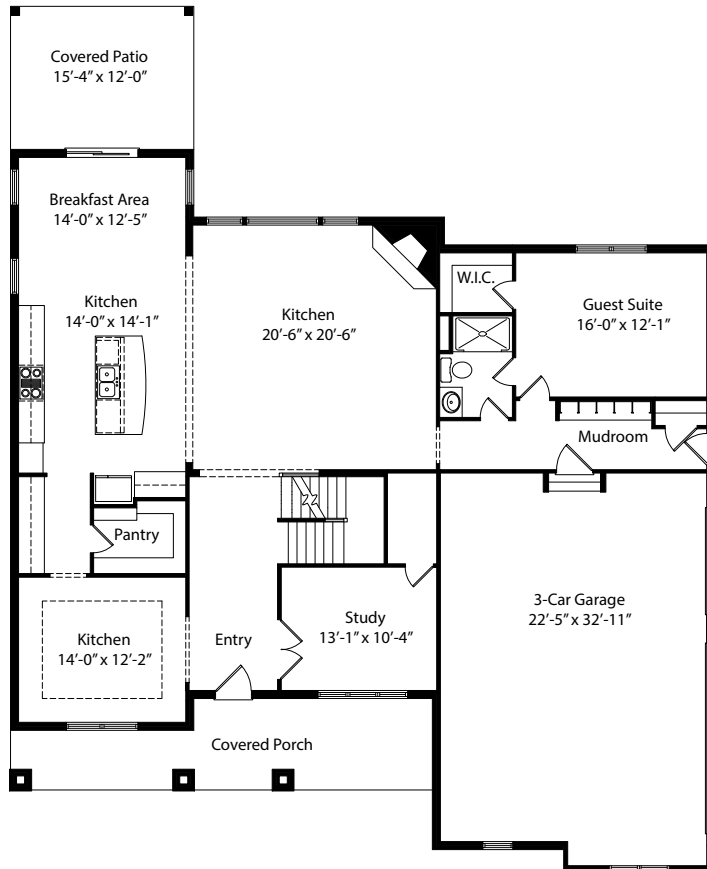
**Call Bob Hines, Coldwell Banker West Shell**

**(513) 260-0428 • Bob@buildcincinnati.com**

Because we are constantly improving our product, we reserve the right to change product features, brand names, dimensions, architectural details & design. This brochure is for illustrative purposes only & is in no way part of a legal, binding contract. Floor plans vary by elevation. Front entry garage is standard. Brick wrap will affect room dimensions. ©2017 John Henry Homes Inc.

Indian Hill Schools - Symmes Township • \$764,900

# 9905 Alydar Court



11025 Reed Hartman Hwy.  
Cincinnati, OH 45242  
513.745.9019  
johnhenryhomes.com



Because we are constantly improving our product, we reserve the right to change product features, brand names, dimensions, architectural details & design. This brochure is for illustrative purposes only & is in no way part of a legal, binding contract. Floor plans vary by elevation. Front entry garage is standard. Brick wrap will affect room dimensions. ©2017 John Henry Homes Inc.