



City of Madeira • The Emma

7450 Dawson Road Ave. • \$739,900



Features:

- Approximately 3115 Sq. Ft.
- Side Entry Garage
- 3rd Car Carriage Garage
- 9' 1st Floor Ceilings
- 9' Basement Walls
- 10' Ceilings in Great Room
- Gas Fireplace with Stone Surround
- Built-in Cubbies in Mud Room
- American Scrape Oak First Floor
- Quartz Countertops
- Luxurious Walk-in Shower
- Rain Shower in Owner's Bath

Price Also Includes

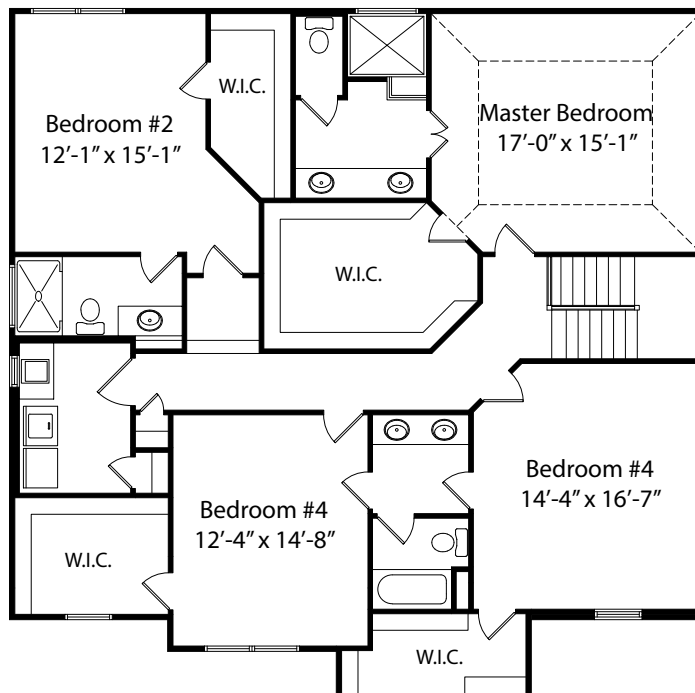
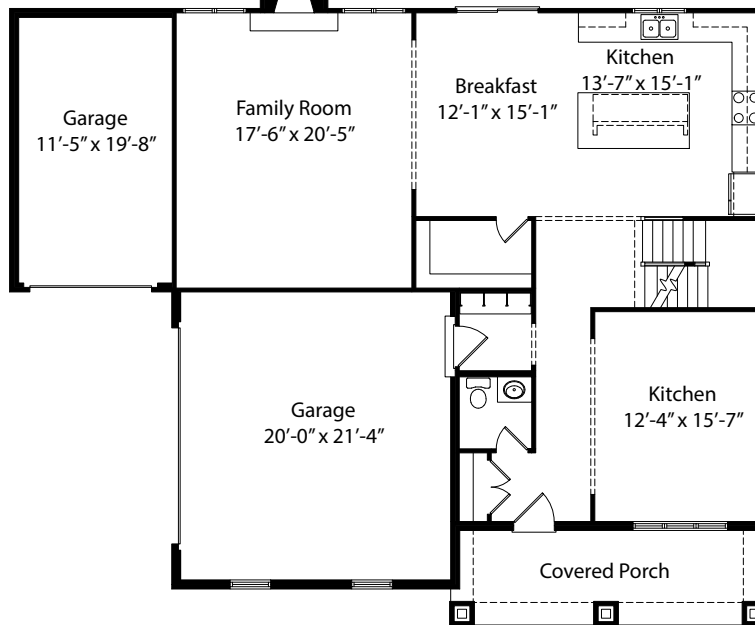
- Gourmet Kitchen
- Aristokraft Winstead Painted Cabinets
- Quiet Close Cabinets - Kitchen
- GE Profile Stainless Steel Appliances
- Gas Range
- Smooth Ceilings
- Designer Tile Backsplash
- Tile Floors Baths and Laundry
- Oak Treads Stairs
- Moen Voss Faucets
- Stained Fiberglass Front Door
- Pendant Lights at Island
- Recessed Lighting

**Call Mike Hines, Coldwell Banker West Shell
(513) 260-0424 • mike@buildcincinnati.com**

Because we are constantly improving our product, we reserve the right to change product features, brand names, dimensions, architectural details & design. This brochure is for illustrative purposes only & is in no way part of a legal, binding contract. Floor plans vary by elevation. Front entry garage is standard. Brick wrap will affect room dimensions.
©2019 John Henry Homes Inc.

City of Madeira • \$739,900

7450 Dawson Road



**COLDWELL
BANKER**

WEST SHELL



BUILD
COLLECTIVE

**john henry
HOMES**

11025 Reed Hartman Hwy.
Cincinnati, OH 45242
513.745.9019
johnhenryhomes.com



Because we are constantly improving our product, we reserve the right to change product features, brand names, dimensions, architectural details & design. This brochure is for illustrative purposes only & is in no way part of a legal, binding contract. Floor plans vary by elevation. Front entry garage is standard. Brick wrap will affect room dimensions.

©2019 John Henry Homes Inc.

Rev 2/2019