



City of Madeira • The Cypress
7302 Iuka Ave. • \$524,900



WEST SHELL



Features:

- Approximately 2720 Sq. Ft.
- 9' 1st Floor Ceilings
- 9' Basement Walls
- Gas Fireplace with Stone Surround
- Built-in Cubbies in Mud Room
- American Scrape Oak First Floor
- Quartz Counter Tops in Kitchen & Owner's Bath
- Luxurious Walk-in Shower
- Rain Shower in Owner's Bath
- 5 1/4" Base Board - First Floor
- Picture Framed Window Openings
- Laundry Sink & Cabinet

Price Also Includes

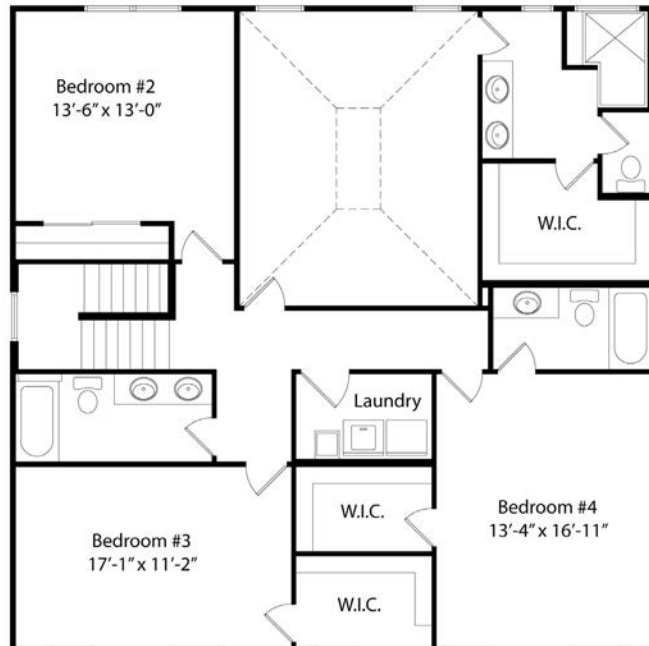
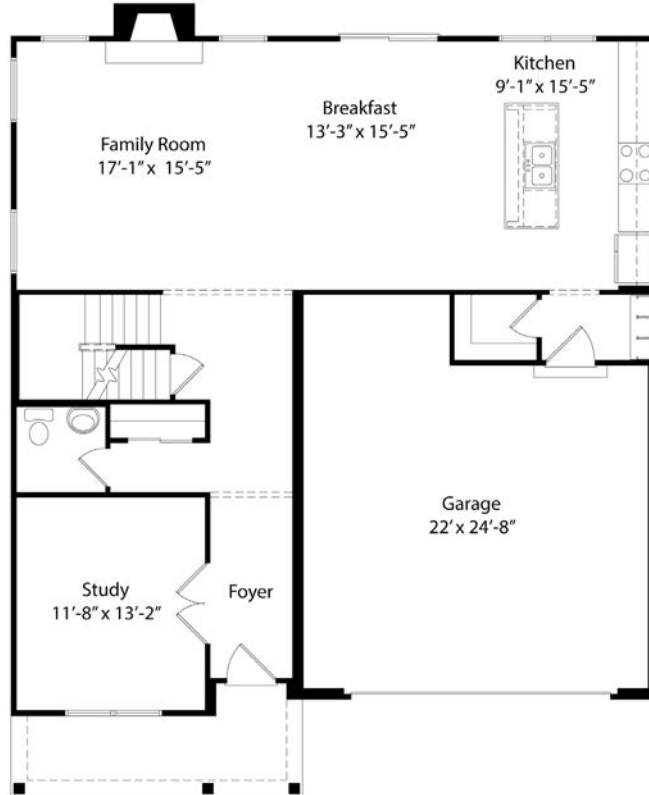
- Gourmet Kitchen
- Aristokraft Winstead Painted Cabinets
- Quiet Close Cabinets - Kitchen
- Gas Cooktop
- GE Profile Stainless Steel Appliances
- Smooth Ceilings
- Upgraded Carpet and Pad
- Designer Glass Backsplash
- Tile Floors Baths and Laundry
- Oak tread stairs
- Stained Fiberglass Front Door
- Moen Voss Faucets

Call Bob Hines, Coldwell Banker West Shell
(513) 260-0428 • Bob@buildcincinnati.com

Because we are constantly improving our product, we reserve the right to change product features, brand names, dimensions, architectural details & design. This brochure is for illustrative purposes only & is in no way part of a legal, binding contract. Floor plans vary by elevation. Front entry garage is standard. Brick wrap will affect room dimensions. ©2018 John Henry Homes Inc.

City of Madeira • \$524,900

7302 Iuka Avenue



WEST SHELL



11025 Reed Hartman Hwy.
Cincinnati, OH 45242
513.745.9019
johnhenryhomes.com



Because we are constantly improving our product, we reserve the right to change product features, brand names, dimensions, architectural details & design. This brochure is for illustrative purposes only & is in no way part of a legal, binding contract. Floor plans vary by elevation. Front entry garage is standard. Brick wrap will affect room dimensions. ©2018 John Henry Homes Inc.