

City of Madeira • The Cypress II  
**7255 Rita Lane • \$574,900**



***Features:***

- Approximately 2766 Sq. Ft.
- 9' 1st Floor Ceilings
- 9' Basement Walls
- Gas Fireplace with Stone Surround
- Built-in Cubbies in Mud Room
- American Scrape Oak First Floor
- Quartz Counter Tops in Kitchen & Master Bath
- Luxurious Walk-in Shower
- Rain Shower in Owner's Bath
- Craftsman Style Stained Front Door
- Laundry Sink & Cabinet
- Deck with Stairs

***Price Also Includes***

- Gourmet Kitchen
- Aristokraft Durham Cabinets
- Quiet Close Cabinets - Kitchen
- GE Profile Stainless Steel Appliances
- Gas Range
- Smooth Ceilings
- Designer Tile Backsplash
- Tile Floors Baths and Laundry
- Oak Treads Stairs
- Moen Voss Faucets
- Stained Fiberglass Front Door
- Pendant Lights at Island
- Recessed Lighting

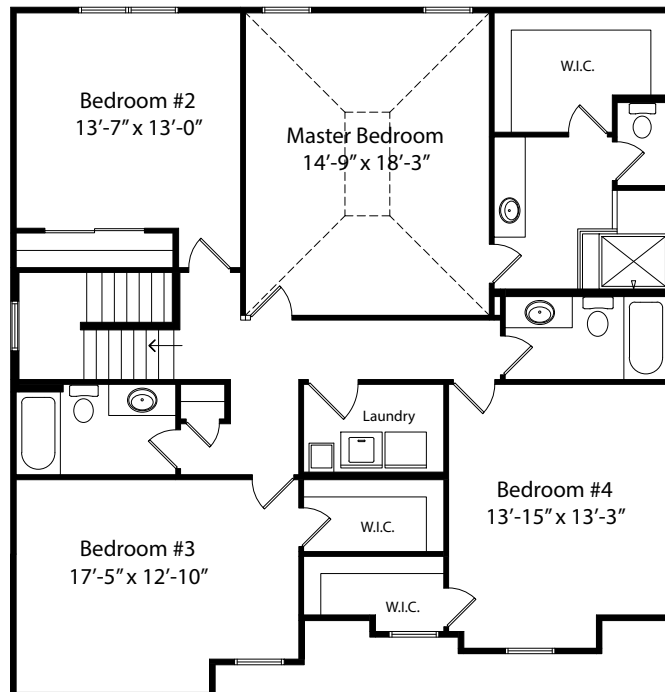
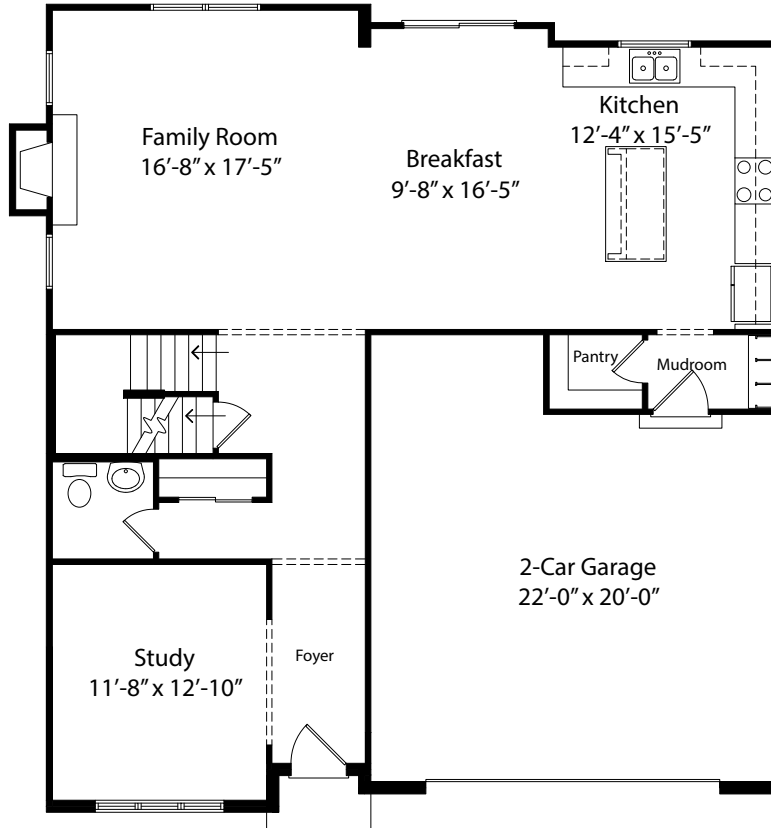


Because we are constantly improving our product, we reserve the right to change product features, brand names, dimensions, architectural details & design. This brochure is for illustrative purposes only & is in no way part of a legal, binding contract. Floor plans vary by elevation. Front entry garage is standard. Brick wrap will affect room dimensions. ©2018 John Henry Homes Inc.

**Call Bob Hines, Coldwell Banker West Shell**  
**(513) 260-0428 • [Bob@buildcincinnati.com](mailto:Bob@buildcincinnati.com)**

# City of Madeira • \$574,900

## 7255 Rita Lane



Because we are constantly improving our product, we reserve the right to change product features, brand names, dimensions, architectural details & design. This brochure is for illustrative purposes only & is in no way part of a legal, binding contract. Floor plans vary by elevation. Front entry garage is standard. Brick wrap will affect room dimensions. ©2018 John Henry Homes Inc.