



City of Madeira • The Cypress  
**7236 Iuka Ave. • \$549,900**



WEST SHELL



***Features:***

- Approximately 2720 Sq. Ft.
- 9' 1st Floor Ceilings
- 9' Basement Walls
- Gas Fireplace with Stone Surround
- Built-in Cubbies in Mud Room
- American Scrape Oak First Floor
- Granite Counter Tops in Kitchen & Master Bath
- Luxurious Walk-in Shower
- Rain Shower in Owner's Bath
- 5 1/2" Baseboards First Floor
- Laundry Sink & Cabinet

***Price Also Includes***

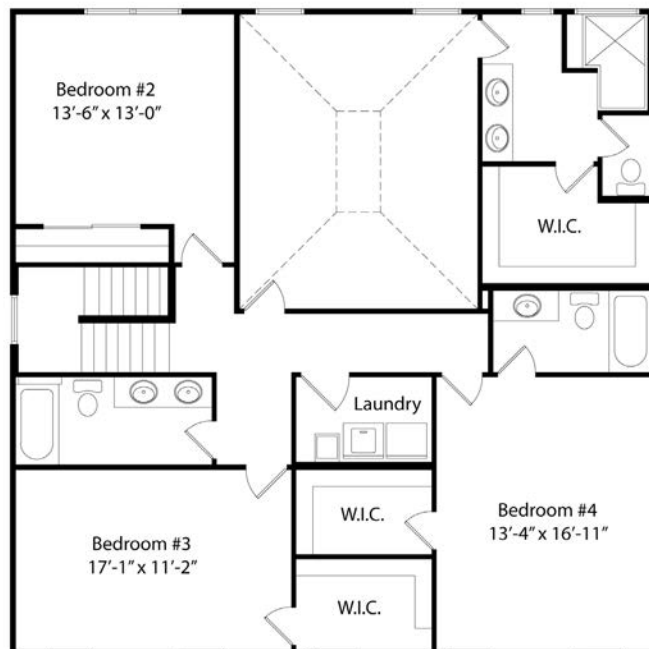
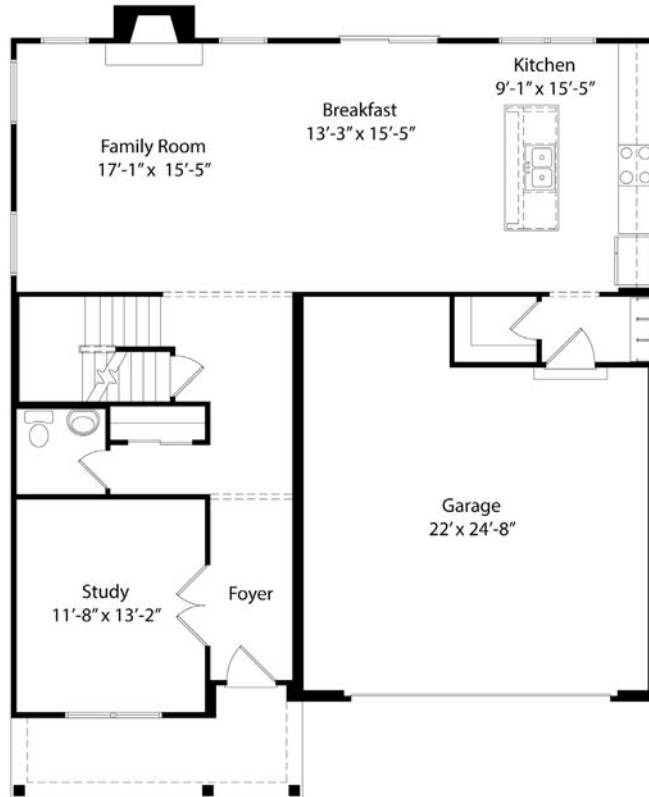
- Gourmet Kitchen
- Aristokraft Winstead Painted Cabinets
- Quiet Close Cabinets - Kitchen
- GE Profile Stainless Steel Appliances
- Gas Range
- Smooth Ceilings
- Designer Tile Backsplash
- Tile Floors Baths and Laundry
- Oak Treads Stairs
- Moen Voss Faucets
- Stained Fiberglass Front Door
- Pendant Lights at Island
- Recessed Lighting

**Call Bob Hines, Coldwell Banker West Shell  
(513) 260-0428 • [Bob@buildcincinnati.com](mailto:Bob@buildcincinnati.com)**

Because we are constantly improving our product, we reserve the right to change product features, brand names, dimensions, architectural details & design. This brochure is for illustrative purposes only & is in no way part of a legal, binding contract. Floor plans vary by elevation. Front entry garage is standard. Brick wrap will affect room dimensions. ©2018 John Henry Homes Inc.

# City of Madeira • \$549,900

## 7236 Iuka Avenue



11025 Reed Hartman Hwy.  
Cincinnati, OH 45242  
513.745.9019  
johnhenryhomes.com



Because we are constantly improving our product, we reserve the right to change product features, brand names, dimensions, architectural details & design. This brochure is for illustrative purposes only & is in no way part of a legal, binding contract. Floor plans vary by elevation. Front entry garage is standard. Brick wrap will affect room dimensions. ©2018 John Henry Homes Inc.