



Hunters Ridge 068 • The Liam

7513 Pheasant Run Court • 484,900



Design Features and Decorator Choices:

- Approximately 2769 Sq. Ft.
- Dimensional Shingles
- 2 ½ Bathrooms
- 4 Bedrooms
- 9' First Floor
- 12 x 16 Wooden Deck
- Lower Level Walk-out
- 2 Car Front Entry Garage
- Garage Door Opener
- Video Doorbell
- 59 Estimated HERS Index
- Full Bath Rough-in
- Aristokraft White Cabinets
- Quartz Countertops
- GE Smooth Top Range
- Stainless Steel Appliances
- LVP First Floor
- Upgraded Shaw Carpet & Pad
- Decorative Backsplash
- LED Recess Style Kitchen Lights
- Pendant Lights at Island
- Upgraded Moen Matte Black Faucets
- Wifi Enabled Thermostat
- Ceiling Fans in Primary & GR

HOA: \$34 Monthly

Call (513) 240-6722 for more information
or visit us today at johnhenryhomes.com



11025 Reed Hartman Hwy.
Cincinnati, OH 45242
513.745.9019
johnhenryhomes.com

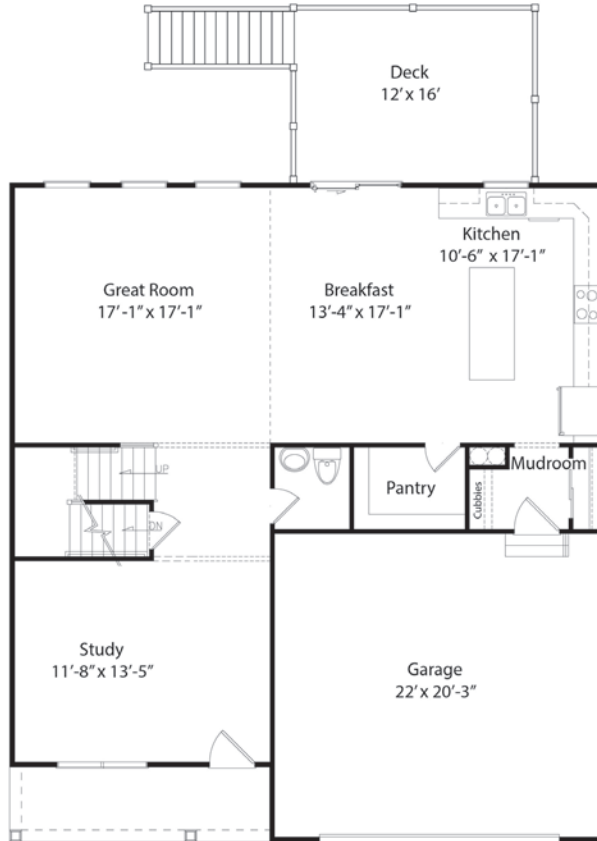


Because we are constantly improving our product, we reserve the right to change product features, brand names, dimensions, architectural details & design. This brochure is for illustrative purposes only & is in no way part of a legal, binding contract. Floor plans vary by elevation. Front entry garage is standard. Brick wrap will affect room dimensions.
©2024 John Henry Homes Inc.

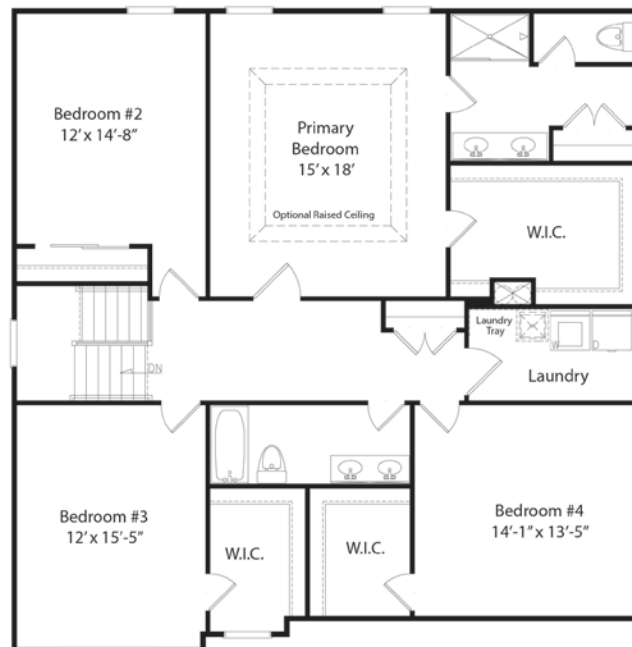
7513 Pheasant Run Court • \$484,900

The Liam

First Floor



Second Floor



11025 Reed Hartman Hwy.
Cincinnati, OH 45242
513.745.9019
johnhenryhomes.com



Because we are constantly improving our product, we reserve the right to change product features, brand names, dimensions, architectural details & design. This brochure is for illustrative purposes only & is in no way part of a legal, binding contract. Floor plans vary by elevation. Front entry garage is standard. Brick wrap will affect room dimensions.
©2024 John Henry Homes Inc.